

Loss-in-Weight Feeder Type DDW-MD0-RT-1.5 with Brabender RotoTube Micro Feeder

The Brabender Loss-in-Weight Feeder Type DDW-MD0-RT-1.5 with Brabender RotoTube Micro Feeder is one of the small-size feeders from the Brabender Lab Linie and feeds fine-grained bulk ingredients down to a minimum feed rate of a few grams per hour.

The feeding method of the RotoTube Feeder is based on a rotary tube with an internal particle guidance system. If more coarse-grained ingredients, particularly granules, are fed, individual grains can virtually be dispensed one after the other. Thus the feeder is particularly suitable for laboratory operation.

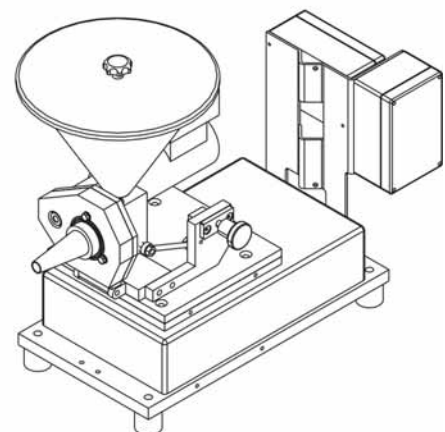
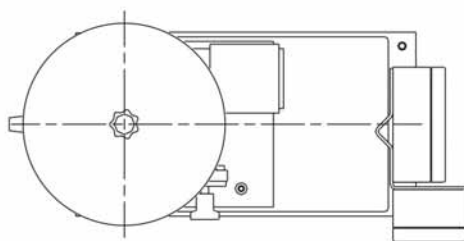
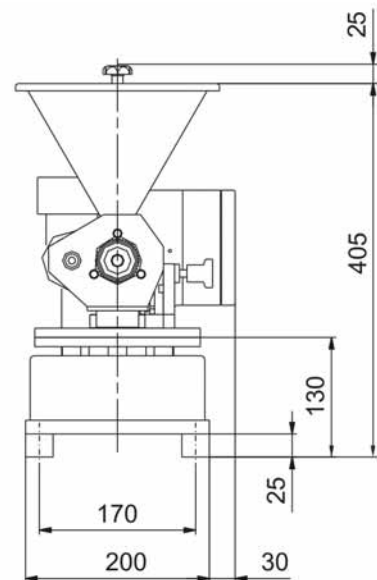
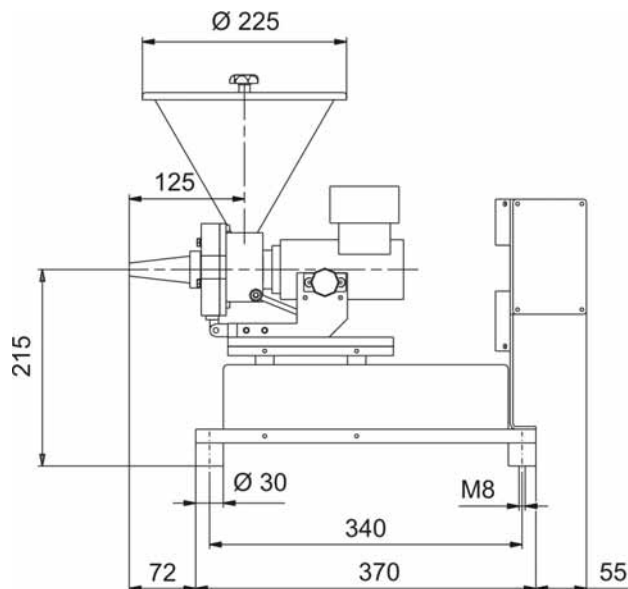
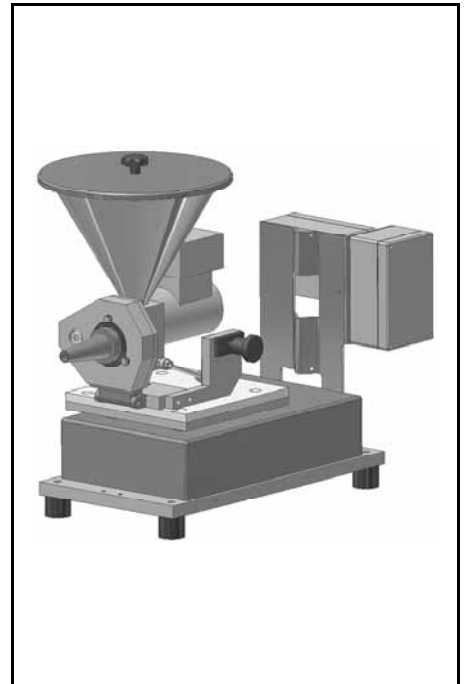
To adapt the feed rate if required, the Brabender RotoTube Micro Feeder is equipped with an infinitely variable tilting system to incline the rotary tube. The little height and low centre of gra-

vity permits to use a platform scale so that the feeding unit is freely accessible from all sides. The combination of scale and feeder forms a high-tech loss-in-weight feeder in miniature.

For weighing the system uses the digital load cell DigiMASS-2 in platform scale design featuring two vibrating wires and real weight determination by comparison of masses. The system offers utmost reproducibility, linearity and long-term stability.

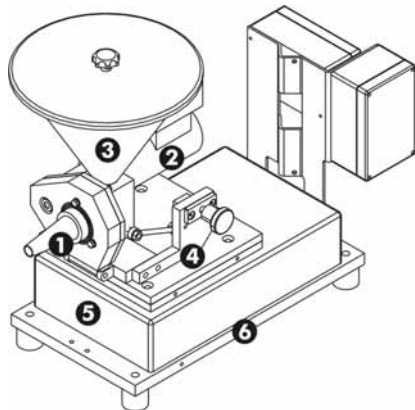
All steel parts in touch with the ingredient are made of stainless steel and aluminium.

The unit conforms to CE directives.



Weight approx. 9 kg

Technical Data*



Components

Loss-in-weight scale with RotoTube Micro Feeder, consisting of:

- ❶ Feed module with rotary tube
- ❷ Three-phase current motor
- ❸ Stainless steel storage hopper, volume 1.5 dm³
- ❹ Tilting system
- ❺ DigiMASS-2 weighing system MD0
- ❻ Base plate with anti-vibration pads

Digital Weighing System

Monobloc weighing module DigiMASS-2 Type MD0 in platform scale design:

- Principle of two vibrating wires
- Real comparison of masses
- Stabilization of physical ambient interferences (temperature variations, shocks) due to the principle of two wires
- Software filter for dynamic electronic vibration attenuation
- High speed data communications due to serial interface
- Theoretically utilizable resolution of 4,000,000 d
- High electromagnetic compatibility

Weighing Range

- 3 kg net

Three-Phase Current Motor

- Wattage: 0.025 kW
- Voltage: 220-415 V, 50 Hz
- Speed: 2700/197 min⁻¹
- Current: 0.35/0.2 A
- Enclosure protection: IP 54
- Insulation class F

Materials

- Steel parts in touch with the ingredient SS 1.4301 (≈ AISI 304) and aluminium

Accessories/Options

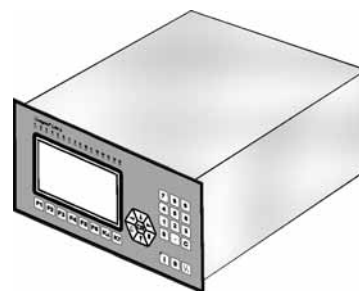
- Cover with handle for manual refilling
- Cover with inlet pipe for automatic refilling
- Larger storage hopper, volume 3 dm³
- Anti-vibration mass plate
- Stainless steel hood to protect the feeder from wind and draught
- Volumetric feeder version without weighing system

Fields of Application

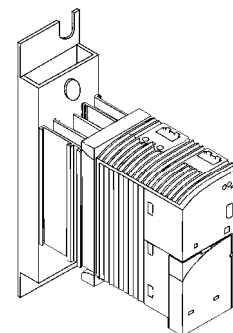
Gravimetric low rate feeding of fine-grained bulk ingredients, particularly granules, in laboratories and trial production lines

Control

Single and multiple feeder controllers Congrav[®] (see the respective Brabender Works Standards):



Speed controller type FC-V1.1 for control cabinet installation (see pertinent Brabender Works Standard):



Alternative: Congrav[®] operating unit and "ISC" control and regulation modules for Brabender SCC (Single Cable Connection) Field Bus System (see pertinent Brabender Works Standards)

brabender

TECHNOLOGIE

An ISO 9001/EN 29001 Certified Company

*Modifications reserved. All data describe our products in a general manner. They are no agreement on or warranty of characteristics in the sense of § 434 or guarantee in the sense of § 443 of the German Civil Code or similar regulations and effect no liability.

Issue 2.0 (February 08)
Supersedes 8.0 (August 03)