

Brabender Loss-in-Weight Feeder Type DDW-MD1[2]-FW18-5

The Brabender Loss-in-Weight Feeder DDW-MD1[2]-FW18-5 is the gravimetric version of the Brabender FlexWall® Feeder FW18 and feeds powder, granules, pellets, chips, etc. with good to restricted flowability. Its little height and low centre of gravity permit to use a platform scale so that the feed unit is freely accessible from all sides.

The Brabender Loss-in-Weight Feeder Type DDW-MD1[2]-FW18-5 consists of a platform scale with an integrated digital monobloc weighing module using the principle of two vibrating wires (DigiMASS-2), the Brabender FlexWall® Feeder FW 18 as feed module and an extension hopper. All modules are fully mounted and wired to junction boxes. Combined with a controller from the Congrav® line they form a high-tech feeding system for highest feeding

accuracy.

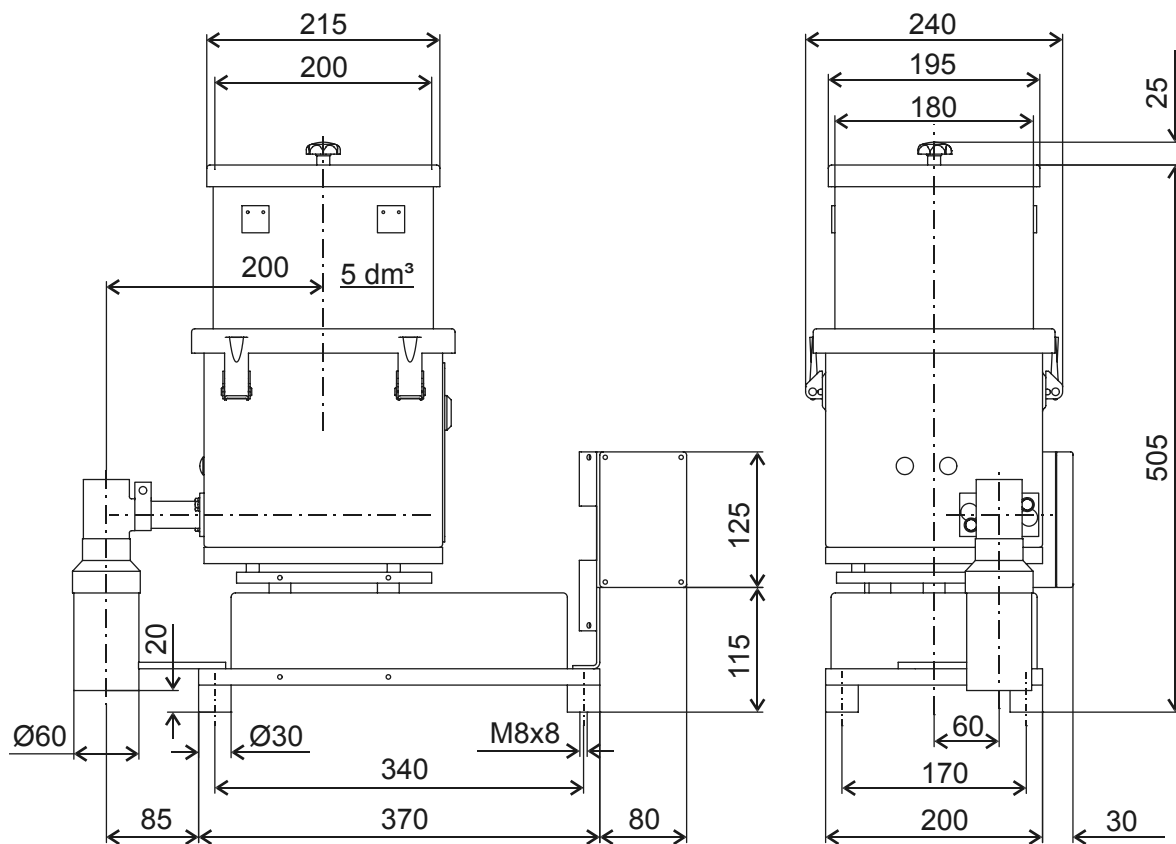
The feed module, the Brabender FlexWall® Feeder with flexible polyurethane hopper and external paddle massage, ensures utmost feeding reliability without the disadvantages of agitators.

The inducement of natural material flow and the full activation of the entire ingredient compartment prevent bridging and ensure non-degrading ingredient treatment and an optimum screw filling level.

The unique design of the Brabender FlexWall® Feeder permits easy disassembly and cleaning.

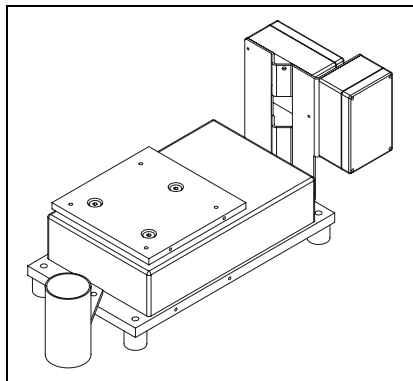
All parts in contact with the ingredient are made of stainless steel. Mild steel parts are painted light grey as per RAL 7035 (textured coating).

The loss-in-weight feeder conforms to CE directives.



Weight approx. 20 kg

Technical Data*



Scale

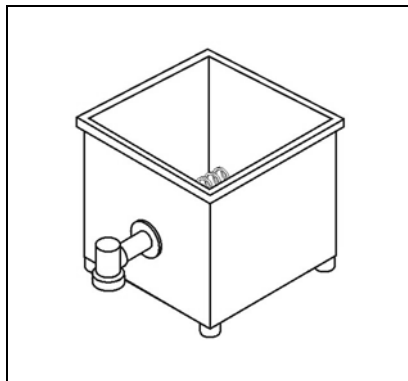
- Platform scale type MD1 or MD2 (depending on bulk density, feed rate and required storage volume)
- Built-in monobloc weighing module DigiMASS-2 with two vibrating wires using the principle of measurement by comparison of masses
- Junction boxes

Weighing ranges:

- Version with scale type MD1: 6 kg net
- Version with scale type MD2: 15 kg net

Further information:

Brochure "DigiMASS-2 - Digital load cell with two vibrating wires"



Feed Module

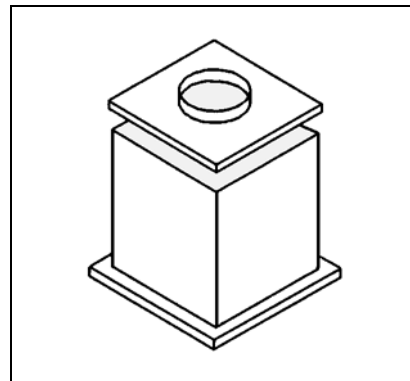
Brabender FlexWall® Feeder FW18:

- Stainless steel exterior housing
- Exchangeable screw
- Flexible polyurethane hopper
- Massage paddles gently inducing natural material flow
- DC gear motor
- Parts in contact with ingredient made of SS 1.4571 (≈ AISI 316 Ti)

Max. theor. feed rate 75 dm³/hr assuming a screw filling level of 100%. Depending on the flowability of the ingredient the actual rate may decrease down to 50%.

Further information:

Works Standard "Brabender FlexWall Feeder FW18"



Extension Hopper

- Rectangular hopper module
- Laid-on cover module with handle for manual refilling
- Cover module with inlet pipe for automatic refilling
- All modules made of stainless steel SS 1.4301 (≈ AISI 304)

Hopper volume 5 dm³ (suited to the feed rate range)

Further information:

Works Standard "Brabender FlexWall® Feeder Type FW18"

Accessories / Options

- Flexible connection sleeves
- Exchange screws and tubes
- Extension hopper SS 1.4571 (≈ AISI 316 Ti)
- Exchange polyurethane hoppers

Special Designs

- Pressure-tight design
- Pressure-compensated inlet
- Pressure-compensated outlet

Control Modules

Congrav® single and multi-feeder controllers (see brochure "Brabender Control Systems" and respective Brabender Works Standards)



An ISO 9001/EN 29001 Certified Company

*Modifications reserved. All data describe our products in a general manner. They are no agreement on or warranty of characteristics in the sense of § 434 or guarantee in the sense of § 443 of the German Civil Code or similar regulations and effect no liability.

Issue 2.0 (February 08)
Supersedes 5.0 (May 05)