

Brabender Screw Feeder Type DSR 28

The Brabender Screw Feeder Type DSR 28 feeds flowable bulk ingredients at low feed rates. It is designed for ease of servicing and quick dismantling and cleaning.

Around the drive unit the single component groups, screw tubes and feed screws can easily be mounted and dismantled by hand.

The Brabender Screw Feeder Type DSR 28 consists of a stainless steel screw trough with interior trough agitator, a feed screw for ingredient dispense and a frequency-controlled three-phase current motor driving the screw.

Depending on refill method, feed rate and storage requirements it can be combined with either a 10 dm³ or 20 dm³ extension hopper.

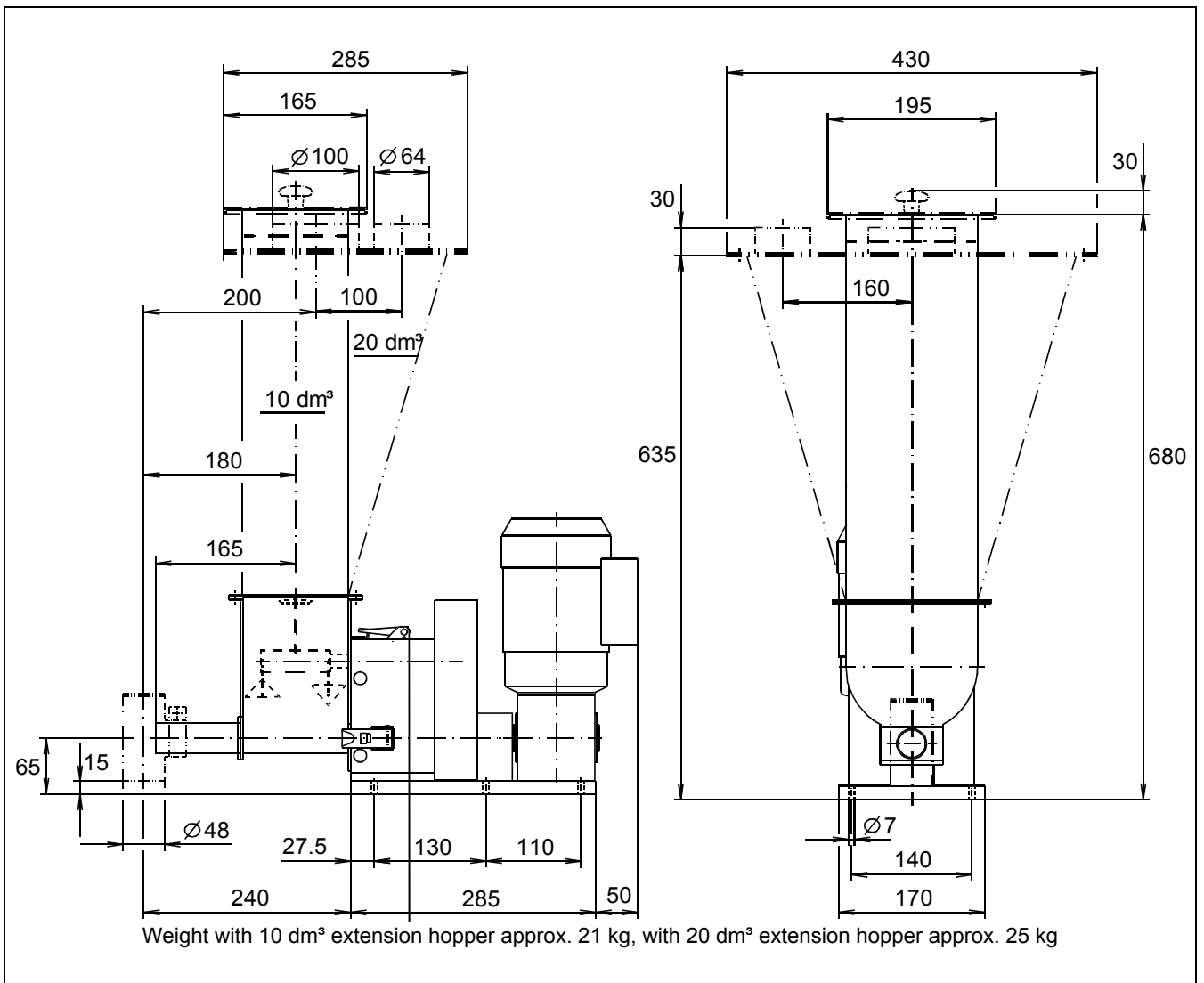
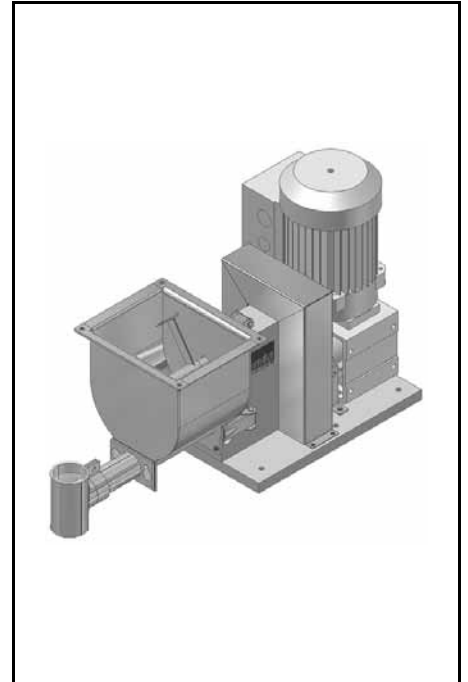
The crucial point for proper function of the system is the ingredient supply

to the screw. Here, the trough agitator provides for homogenization of the ingredient and for even filling of the screw at a constant level: the prerequisite to high-accuracy feeding. The universal design of the different screw profiles permits easy interchanging of the screws.

The feeder can be employed as a stand-alone volumetric unit or, combined with a Brabender scale and a microcomputer controller from the Congrav[®] product line or the Brabender SCC Field Bus System, as a gravimetric loss-in-weight feeder.

All parts in touch with the ingredient are made of stainless steel.

The unit conforms to CE directives.



Technical Data*

Available Srew Sizes and Feed Rates

| Screw Type Ø mm x p mm | Tube Designation | Tube Dia. mm | Speed r.p.m. | Max. Feed Rate dm³/hr* |
|---------------------------|------------------|-----------------|-----------------|---------------------------|
| Spiral Screw | | | | |
| S 13/10 | 160 | 20.0 x 2.0 | 254/100 Hz | 15 |
| S 13/15 | 160 | 20.0 x 2.0 | 254/100 Hz | 25 |
| S 18/13 | 210 | 25.0 x 2.0 | 254/100 Hz | 39 |
| S 18/19 | 210 | 25.0 x 2.0 | 254/100 Hz | 60 |
| S 18/29 | 210 | 25.0 x 2.0 | 254/100 Hz | 90 |
| S 28/22 | 320 | 35.0 x 1.5 | 254/100 Hz | 175 |
| S 28/35 | 320 | 35.0 x 1.5 | 254/100 Hz | 295 |

* The max. feed rates mentioned above are theoretical values based on a screw filling level and a motor speed of 100 % each. Depending on the flow characteristics of the ingredient the screw filling level may decrease down to 50 %.

Screw / Agitator Drive

Three-Phase Current Motor

Wattage: 0.25 kW
Voltage: 230/400 V
Speed: 127/50 Hz; 254/100 Hz
Protection: IP 65, insulation class F

Speed Controller

Frequency Converter Type FC-B1

in an IP55 housing with built-in set-point potentiometer or for external control by 0-5 V, 0-10 V, 0-20 mA, 4-20 mA (see Works Standard "Brabender Speed Controller Type FC-B1"), or

Frequency Converter Type FC-V1.1

for control cabinet installation, for external control by 0-5 V, 0-10 V, 0-20 mA, 4-20 mA or by a setpoint potentiometer (see Works Standard "Brabender Speed Controllers Types FC-V1.1 to FC-V7.1")

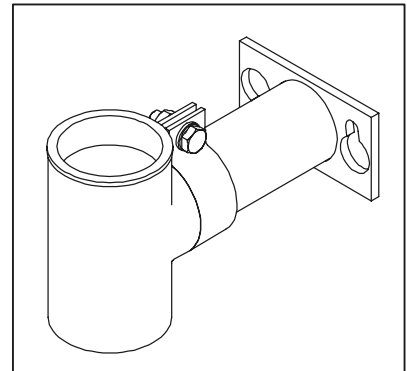
Materials / Finish

Parts in touch with the ingredient SS 1.4301 (≈ AISI 304), mild steel parts painted light grey as per RAL 7035

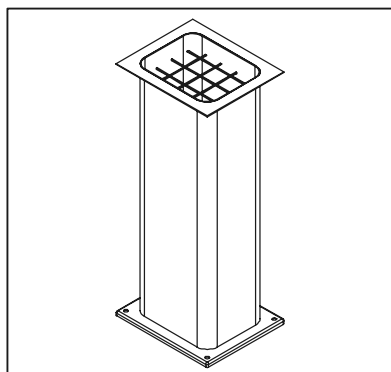
Accessories / Options

- Stainless steel extension hopper, SS 1.4301 (≈ AISI 304):
 - Rectangular, volume 10 dm³
 - Conical, volume 20 dm³
- Cover with handle, SS 1.4301 (≈ AISI 304), for manual refilling
- Safety grid, SS 1.4301 (≈ AISI 304)
- Cover with inlet pipe for automatic refilling
- Exchange screws and screw tubes
- Downspout
- Flexible inlet sleeves
- Flexible outlet sleeves
- Gravimetric version as loss-in-

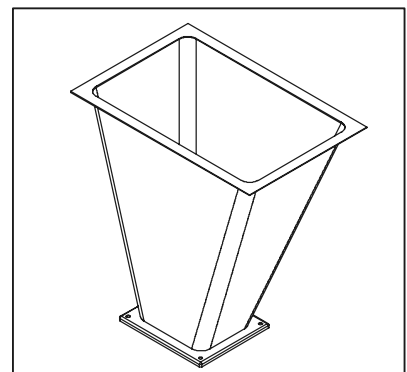
weight feeder with Brabender scale (see Works Standard "Loss-in-Weight Feeder Type DDW-MD2[3]-DSR28")



Downspout



Rectangular hopper, volume 10 dm³



Conical hopper, volume 20 dm³

brabender

TECHNOLOGIE

An ISO 9001/EN 29001 Certified Company

*Modifications reserved. All data describe our products in a general manner. They are no agreement on or warranty of characteristics in the sense of § 434 or guarantee in the sense of § 443 of the German Civil Code or similar regulations and effect no liability.

Issue 2.0 (February 08)
Supersedes 3.0 (March 03)