

Brabender FlexWall® Feeder Type FW120N

The Brabender FlexWall® Feeder Type FW120N feeds powders, granules, pellets, flakes, chips, fluffs, glass fibres, etc. with good to poor flowability. It can be employed as a stand alone volumetric unit, or by simply adding a Brabender scale, as a gravimetric loss-in-weight feeder.

The Brabender FlexWall® Feeder consists of a stainless steel exterior housing, a feed screw for ingredient dispense, a variable speed frequency controlled three-phase current motor driving the feed screw, and a flexible polyurethane hopper activated by external massage paddles.

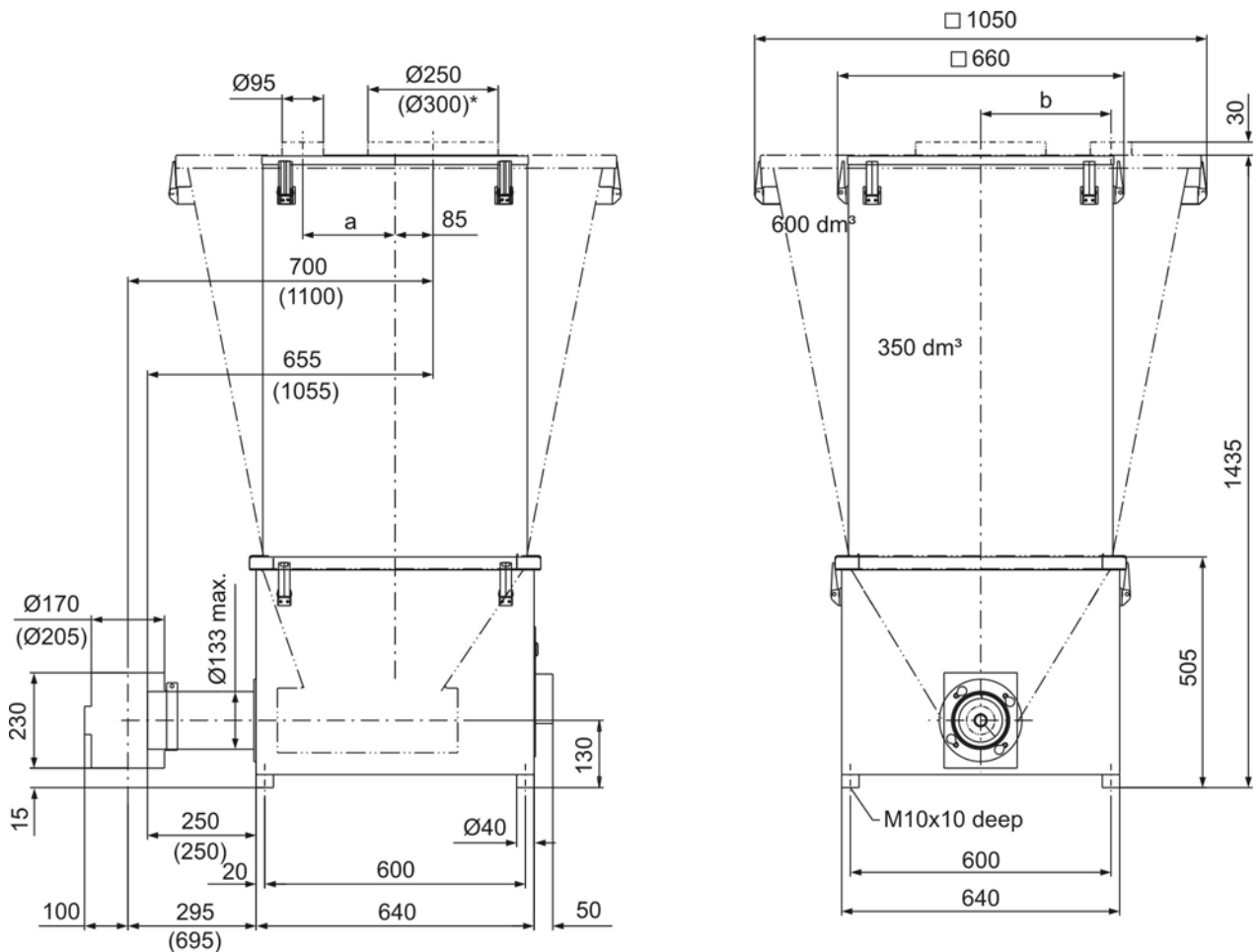
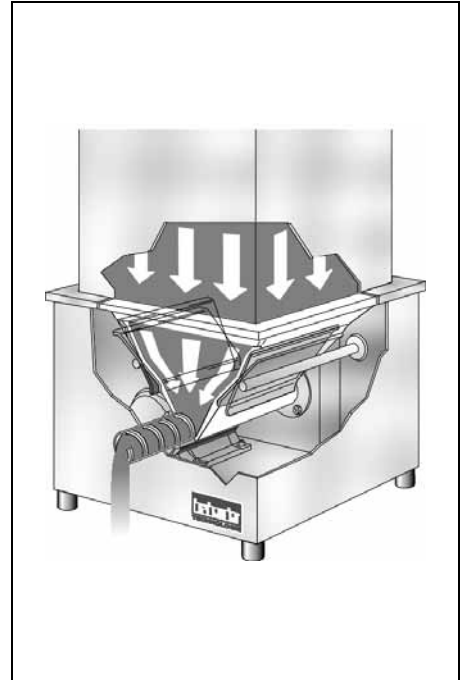
The natural ingredient flow thus induced and the full activation of the entire ingredient compartment prevent bridging and ingredient deterioration and ensure an optimum screw

filling level.

To suit a variety of ingredients, various paddle agitation amplitudes can be adjusted. An optional separate variable speed paddle motor allows infinitely variable adjustment of the frequency of the paddle movement.

The unique design of the Brabender FlexWall® Feeder permits easy disassembly and cleaning. The polyurethane hopper features a lip which seals to the upper edge of the stainless steel housing and can easily be removed for wet cleaning.

The unit conforms to CE directives.



*Ø300 only available with 600 dm³ extension hopper

Position of vent pipe: 350 dm³ hopper: a = 200 mm, b = 200 mm

600 dm³ hopper: a = 215 mm, b = 300 mm

Weight without extension hopper approx. 105 kg

Technical Data*

Available Screw Sizes and Feed Rates

Screw Type	Ø mm x p mm	Tube Designation	Tube Dia. mm	Speed r.p.m.	Max. dm³/hr*
Spiral Screw (S)	S 79/ 45	843	88.9 x 2.3	138/100 Hz	1640
	S 79/ 82	843	88.9 x 2.3	138/100 Hz	3130
	S 103/ 66	1091	114.3 x 2.6	138/100 Hz	4300
	S 103/105	1091	114.3 x 2.6	138/100 Hz	6980
	S 120/120	1270	133.0 x 3.0	138/100 Hz	10930
Blade Screw (B)	B 79/ 45	843	88.9 x 2.3	138/100 Hz	1590
	B 79/ 82	843	88.9 x 2.3	138/100 Hz	2980
	B 103/ 66	1091	114.3 x 2.6	138/100 Hz	3960
	B 103/105	1091	114.3 x 2.6	138/100 Hz	6410
	B 120/120	1270	133.0 x 3.0	138/100 Hz	10230
Granule Screw (S)	S 79/ 45	1091	114.3 x 2.6	138/100 Hz	2400
	S 79/ 82	1091	114.3 x 2.6	138/100 Hz	4520
	S 103/ 66	1270	133.0 x 3.0	138/100 Hz	5420
	S 103/105	1270	133.0 x 3.0	138/100 Hz	8770
Glass Fibre Screw (F)	F 12066/90-K60	1270	133.0 x 3.0	138/100 Hz	on request

* The max. feed rates mentioned above are theoretical values based on a screw filling level and a motor speed of 100 % each. Depending on the flow characteristics of the ingredient the screw filling level may decrease down to 50 %. The feed rates of glass fibre screws are actual rates referring to glass fibres commonly used, well-flowing, bulk density 0.5 kg/dm³, length 3-6 mm.

Component Groups

- Stainless steel exterior housing with removable back plate
- Screw and screw tube
- Flexible polyurethane hopper, volume approx. 65 dm³
- Frequency controlled 3-phase motor
- Massage paddles to promote ingredient flow without deterioration
- Chainless drive mechanism

Screw Drive

Three-Phase Motor (Direct Drive)

Wattage: 0.75 kW

Protection: IP 66

Insulation class F

Frequency Converter FC-B2 in an IP55 housing (setpoint potentiometer or external control by 0-5(10) V, 0(4)-20 mA), or **Frequency Converter**

FC-V2.1 for control cabinet installation (external control by 0-5(10) V, 0(4)-20 mA or by setpoint potentiometer).
Details: see separate Works Standards

Materials

- Stainless steel exterior housing
- Hopper: PU (white), abrasion-resistant, wear-free, food-proof in compliance with the German Foodstuff and Consumer Goods Act (LMBG)
- Steel parts in contact with ingredient SS 1.4301 (≈ AISI 304)

Accessories / Options

- Stainless steel extension hopper, SS 1.4301 (≈ AISI 304), 350 dm³ (weight approx. 50 kg) or 600 dm³ (weight approx. 90 kg)
- Cover with inlet pipe and vent pipe

for automatic refilling

- Cover with hinged part-cover for manual refilling
- Downspout at screw tube outlet
- Connection periphery: flexible inlet, outlet and vent sleeves
- Screw speed monitoring system
- Separate variable speed paddle motor for infinitely variable setting of the paddle movement frequency
- Quick-closing valve on outlet tube
- Screw extension 400 mm (not for blade screws)
- Exchange screws and screw tubes
- Hopper made of anti-static material

Fields of Application

Volumetric or - in conjunction with a Brabender scale - gravimetric feeding (see Brabender Works Standard "Brabender Loss-in-Weight Feeder Type DDW-MS-FW120N-350[600]")



TECHNOLOGIE

An ISO 9001/EN 29001 Certified Company

*Modifications reserved. All data describe our products in a general manner. They are no agreement on or warranty of characteristics in the sense of § 434 or guarantee in the sense of § 443 of the German Civil Code or similar regulations and effect no liability.

Issue 6.0 (June 08)
Supersedes 2.0 (February 08)