

## Brabender FlexWall® Feeder Type FW155N

The Brabender FlexWall® Feeder Type FW155N feeds powders, granules, pellets, flakes, chips, fluffs, glass fibres, etc. with good to poor flowability. It can be employed as a stand alone volumetric unit, or by simply adding a Brabender scale, as a gravimetric loss-in-weight feeder.

The Brabender FlexWall® Feeder consists of a stainless steel exterior housing, a feed screw for ingredient dispense, a variable speed frequency controlled three-phase current motor driving the feed screw, and a flexible polyurethane hopper activated by external massage paddles.

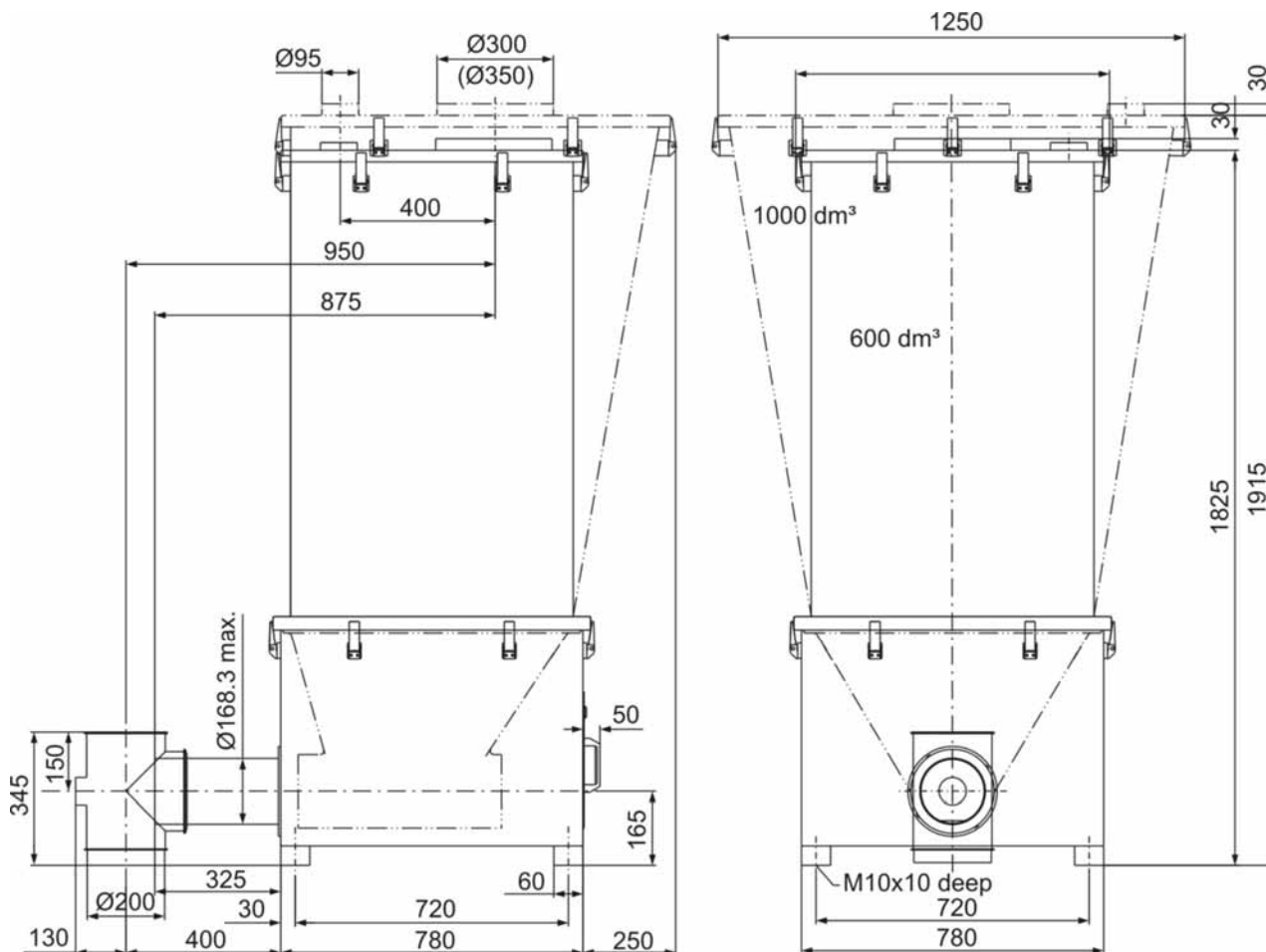
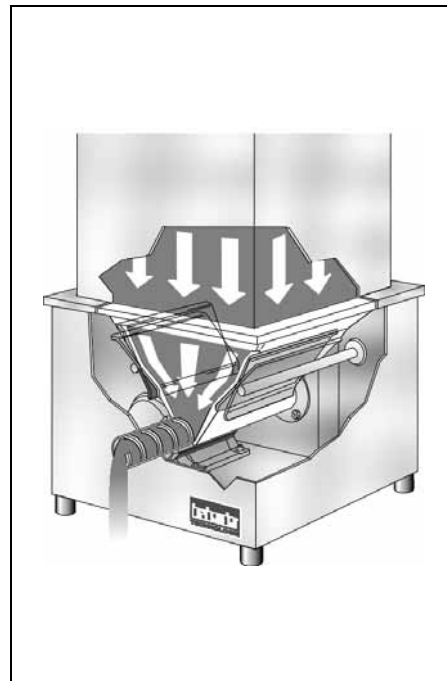
The natural ingredient flow thus induced and the full activation of the entire ingredient compartment prevent bridging and ingredient deterioration and ensure an optimum screw

filling level.

To suit a variety of ingredients, various paddle agitation amplitudes can be adjusted. An optional separate variable speed paddle motor allows infinitely variable adjustment of the frequency of the paddle movement.

The unique design of the Brabender FlexWall® Feeder permits easy disassembly and cleaning. The polyurethane hopper features a lip which seals to the upper edge of the stainless steel housing and can easily be removed for wet cleaning.

The unit conforms to CE directives.



\*Ø350 only available with 1000 dm<sup>3</sup> extension hopper  
Weight without extension hopper approx. 140 kg

## Technical Data\*

### Available Screw Sizes and Feed Rates

Screw Type	Ø mm x p mm	Tube Designation	Tube Dia. mm	Speed r.p.m.	Max. dm³/hr*
Spiral Screw (S)	S 103/105	1091	114.3 x 2.6	152/100 Hz	7080
	S 120/120	1270	133.0 x 3.0	152/100 Hz	11090
	S 155/100	1631	168.3 x 2.6	152/100 Hz	15290
	S 155/165	1631	168.3 x 2.6	152/100 Hz	25570
Blade Screw (B)	B 103/105	1091	114.3 x 2.6	152/100 Hz	6510
	B 120/120	1270	133.0 x 3.0	152/100 Hz	10380
	B 155/100	1631	168.3 x 2.6	152/100 Hz	13860
	B 155/165	1631	168.3 x 2.6	152/100 Hz	23130
Granule Screw (S)	S 103/105	1270	133.0 x 3.0	152/100 Hz	8900
	S 120/120	1631	168.3 x 2.6	152/100 Hz	15550

\* The max. feed rates mentioned above are theoretical values based on a screw filling level and a motor speed of 100 % each. Depending on the flow characteristics of the ingredient the screw filling level may decrease down to 50 %.

### Component Groups

- Stainless steel exterior housing with removable back plate
- Screw and screw tube
- Flexible polyurethane hopper, volume approx. 95 dm³
- Frequency controlled 3-phase motor
- Massage paddles to promote ingredient flow without deterioration
- Chainless drive mechanism

### Screw Drive

#### Three-Phase Motor (Direct Drive)

Wattage: 1.5 kW

Protection: IP 55

Insulation class F

**Frequency Converter FC-B3** in an IP55 housing (setpoint potentiometer or external control by 0-5(10) V, 0(4)-20 mA), or **Frequency Converter FC-**

**V3.1** for control cabinet installation (external control by 0-5(10) V, 0(4)-20 mA or by setpoint potentiometer). Details: see separate Works Standards

### Materials

- Stainless steel exterior housing
- Hopper: PU (white), abrasion-resistant, wear-free, food-proof in compliance with the German Foodstuff and Consumer Goods Act (LMBG)
- Steel parts in contact with the ingredient: SS 1.4301 (≈ AISI 304)

### Accessories / Options

- Stainless steel extension hopper, 600 dm³ (rectangular), weight incl. cover approx. 85 kg, or 1000 dm³ (conical), weight incl. cover approx. 150 kg, SS 1.4301 (≈ AISI 304)

- Cover with inlet pipe and vent pipe for automatic refilling
- Cover with hinged part-cover for manual refilling
- Downspout at screw tube outlet
- Connection periphery: flexible inlet sleeves, outlet sleeves and vent sleeves
- Screw speed monitoring system
- Separate variable speed paddle motor for infinitely variable setting of the paddle movement frequency
- Quick-closing valve on outlet tube
- Exchange screws and screw tubes
- Hopper made of anti-static material

### Fields of Application

Volumetric feeding or - in conjunction with a Brabender scale - gravimetric feeding (see Brabender Works Standard "Brabender Loss-in-Weight Feeder Type DDW-MS-FW155N-600[1000]")



**TECHNOLOGIE**  
An ISO 9001/EN 29001 Certified Company

\*Modifications reserved. All data describe our products in a general manner. They are no agreement on or warranty of characteristics in the sense of § 434 or guarantee in the sense of § 443 of the German Civil Code or similar regulations and effect no liability.

Issue 5.0 (May 09)  
Supersedes 6.0 (June 08)