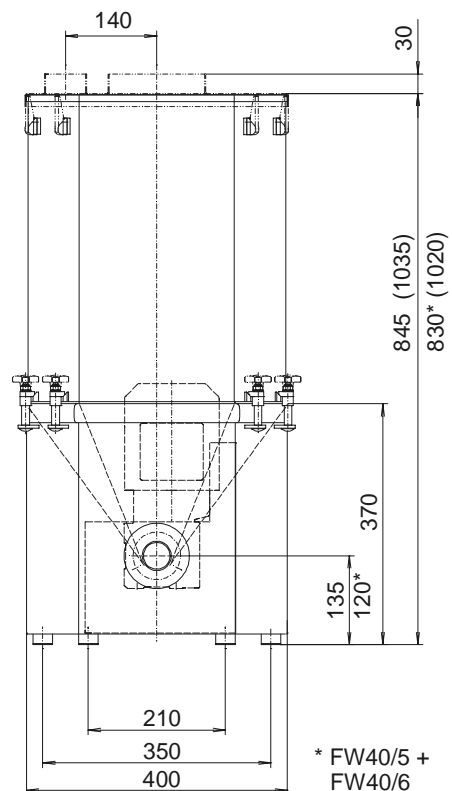
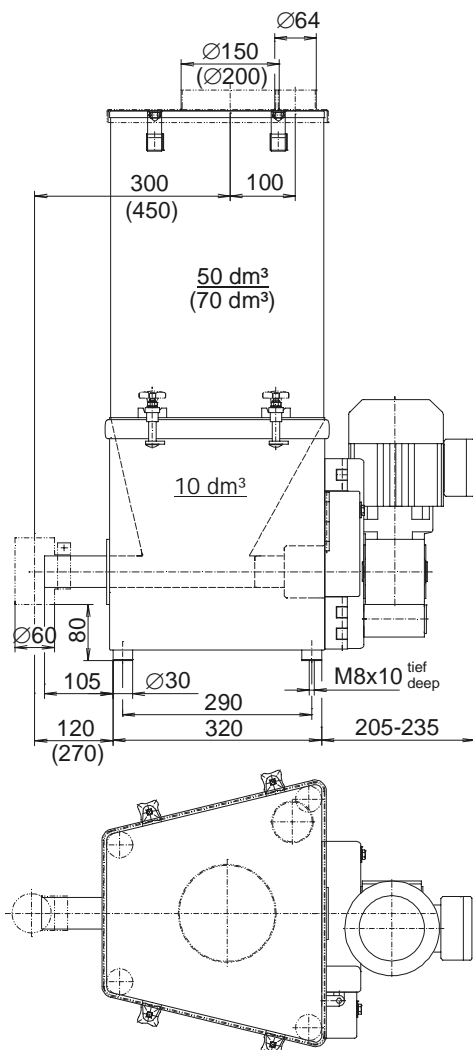


Brabender FlexWall® Plus Feeder Type FW40 Plus

The Brabender FlexWall® Plus Feeder Type FW40 Plus is a compact universal metering feeder for virtually all bulk ingredients and fibres. It is available as a volumetric unit or with a built-in Brabender weighing module as a loss-in-weight feeder for gravimetric feeding. The unit consists of a trapeziform stainless steel exterior housing, a flexible polyurethane hopper with external massage paddles, a single or twin screw with screw tube and a frequency-controlled three-phase current motor driving the screw and the paddles. The trapezoid design and the paddle principle ensuring full agitation of the entire ingredient compartment induce free mass flow and an optimum screw filling level without ingredient deterioration. To suit a variety of ingredients, the paddle agitation amplitudes can

be varied. Single and twin screws are interchangeable. The unique design of the Brabender FlexWall® Plus Feeder permits easy disassembly and cleaning. The polyurethane hopper features a lip, which seals to the upper edge of the stainless steel housing, and can easily be removed for wet cleaning. The super compact trapeziform design allows to configure up to 6 feeders or more around a central point of discharge in an extraordinarily space-saving manner. Suitable support structures can be supplied. Operation, service and maintenance do not require lateral feeder access. For backward screw exchange from the rear feeder end a version can be supplied featuring a slewable motor. A further variant without paddles is also available. The unit conforms to CE directives.



Weight without extension hopper approx. 30-40 kg
 Weight with extension hopper approx. 40-50 kg

Technical Data*

Available Screw Sizes and Feed Rates					
Screw Type	Ø mm x p mm	Tube Designation	Tube Dia. mm	Speed r.p.m.	Max. Feed Rate dm³/hr*
Spiral Screw (S) (TA = with trough activation)	S 20/15 (TA)	210	25.0 x 2.0	335 (192**) / 100Hz	70 (40**)
	S 20/19 (TA)	210	25.0 x 2.0	335 (192**) / 100Hz	94 (54**)
	S 20/24 (TA)	210	25.0 x 2.0	335 (192**) / 100Hz	125 (72**)
	S 24/27 (TA)	260	30.0 x 2.0	335 (192**) / 100Hz	213 (122**)
	S 24/35 (TA)	260	30.0 x 2.0	335 (192**) / 100Hz	283 (162**)
	S 28/22 (TA)	320	38.0 x 3.0	335 (192**) / 100Hz	234 (134**)
	S 28/35 (TA)	320	38.0 x 3.0	335 (192**) / 100Hz	393 (225**)
	S 33/35	350	38.0 x 1.5	335 (192**) / 100Hz	535 (307**)
	S 43/27	443	48.3 x 2.0	335 (192**) / 100Hz	642 (368**)
S 43/42	443	48.3 x 2.0	335 (192**) / 100Hz	1075 (616**)	
Blade Screw (B)	B 28/28	320	38.0 x 3.0	335 (192**) / 100Hz	230 (132**)
	B 32/38	350	38.0 x 1.5	335 (192**) / 100Hz	452 (259**)
	B 40/32	443	48.3 x 2.0	335 (192**) / 100Hz	526 (302**)
	B 40/46	443	48.3 x 2.0	335 (192**) / 100Hz	787 (451**)
Granule Screw (S)	S 20/15	320	38.0 x 3.0	335 (192**) / 100Hz	135 (78**)
	S 20/19	320	38.0 x 3.0	335 (192**) / 100Hz	177 (102**)
	S 20/24	320	38.0 x 3.0	335 (192**) / 100Hz	230 (132**)
	S 24/27	350	38.0 x 1.5	335 (192**) / 100Hz	338 (194**)
	S 24/35	350	38.0 x 1.5	335 (192**) / 100Hz	446 (256**)
	S 28/22	443	48.3 x 2.0	335 (192**) / 100Hz	416 (238**)
	S 28/35	443	48.3 x 2.0	335 (192**) / 100Hz	682 (391**)
S 33/35	443	48.3 x 2.0	335 (192**) / 100Hz	798 (457**)	
Fibre Screw (F)	F 3322/35-K23	350	38.0 x 1.5	335 (192**) / 100Hz	176 (101**)
	F 3322/35-K12	350	38.0 x 1.5	335 (192**) / 100Hz	297 (170**)
	F 4032/46-K15	443	48.3 x 2.0	335 (192**) / 100Hz	648 (372**)
Twin Concave Screw (TC)***	TC 20/12	200 T	24.0 x 2.0	335 (192**) / 100Hz	48 (28**)
	TC 20/11	223 T	26.9 x 2.3	335 (192**) / 100Hz	93 (53**)
	TC 20/20	223 T	26.9 x 2.3	335 (192**) / 100Hz	192 (110**)

* Theor. values at 100 % screw filling level and motor speed. Depending on the flow characteristics the screw filling level may decrease down to 50 %.
 ** Values in brackets refer to feeders with optional 192 min⁻¹ drive motors (standard in case of model FW40/5)
 *** Twin screws only available for model FW40/0 with slewable motor

Models

Type	Motor	kW	min ⁻¹	Paddles
FW40/0	slewable	0.37	335*	yes
FW40/1	slewable	0.37	335*	no
FW40/5	firm	0.37	192	yes
FW40/6	firm	0.37	335*	no

* optionally 192 min⁻¹

Drive

Three-Phase Motor (Direct Drive)
 Wattage 0.37 kW, enclosure protection min. IP 55, insulation class F

Frequency Converter FC-B1/FC-V1.1
 (see the according Works Standards)

Materials

- Stainless steel exterior housing, hopper PU (white), food-proof in compliance with the German Foodstuff and Consumer Goods Act (LMBG)
- Ingredient-touched steel parts at least SS 1.4301 ≈ AISI 304 (blade screws SS 1.4305 ≈ AISI 303, whirled)

Accessories / Options

- 50dm³ extension hopper, SS 1.4301
- 70 dm³ extension hopper, SS 1.4301
- Cover with inlet pipe and vent pipe
- Laid-on cover with handle

- Downspout at screw tube outlet
- Flexible connection sleeves
- Screw speed monitoring system
- Screw extension 150 mm (not for blade and twin screws)
- Exchange screws and screw tubes
- Hopper made of anti-static material
- Explosion-proof design complying with EU Directive 94/9/EG (ATEX 95)
- "Easy Change" version with interchangeable feed modules
- Version in "Hygienic Design"
- Gravimetric version as loss-in-weight feeder with built-in digital load cell DigiMASS-2 (see Works Standard "DDW-MD5-FW40 Plus-50[70]")



TECHNOLOGIE
 An ISO 9001/EN 29001 Certified Company

*Modifications reserved. All data describe our products in a general manner. They are no agreement on or warranty of characteristics in the sense of § 434 or guarantee in the sense of § 443 of the German Civil Code or similar regulations and effect no liability.

Issue 2.0 (February 08)
 Supersedes 8.0 (August 07)