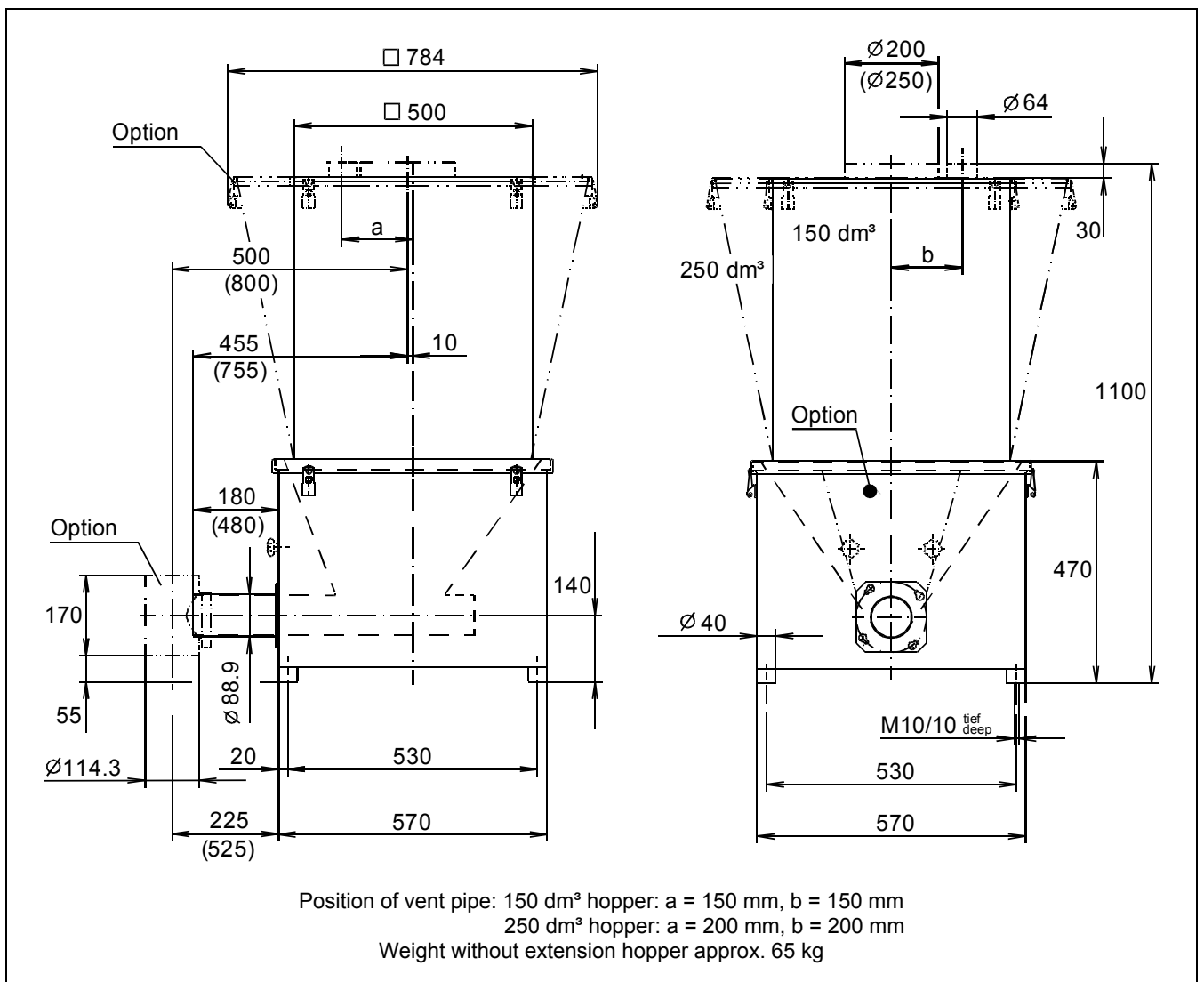
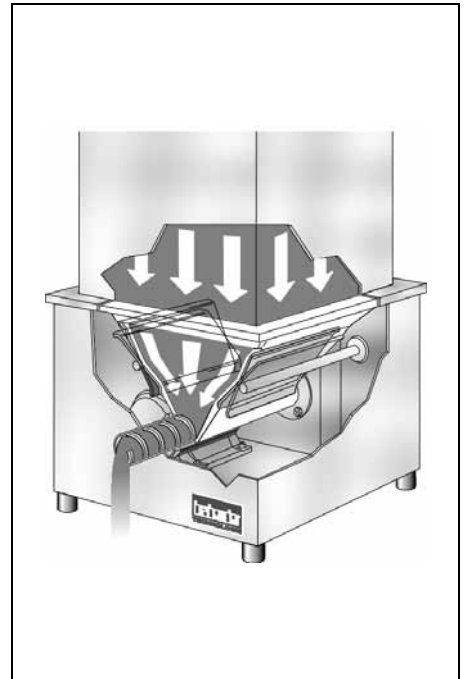


## Brabender FlexWall® Feeder Type FW 79

The Brabender FlexWall® Feeder Type FW 79 feeds powders, granules, pellets, flakes, chips, fluffs, glass fibres, etc. with good to poor flowability. It can be employed as a stand alone volumetric unit, or by simply adding a Brabender scale, as a gravimetric loss-in-weight feeder. The Brabender FlexWall® Feeder consists of a stainless steel exterior housing, a feed screw for ingredient dispense, a variable speed frequency controlled three-phase current motor driving the feed screw, and a flexible polyurethane hopper activated by external massage paddles. The natural ingredient flow thus induced and the full activation of the entire ingredient compartment prevent bridging and ingredient deterioration and ensure an optimum screw filling level. To suit a variety of ingredients, three paddle agitation amplitudes can be ad-

justed. An optional separate variable speed paddle motor allows infinitely variable adjustment of the frequency of the paddle movement. The unique design of the Brabender FlexWall® Feeder permits easy disassembly and cleaning. The polyurethane hopper features a lip which seals to the upper edge of the stainless steel housing and can easily be removed for wet cleaning. All internal components are secured to a common chassis, which is completely removable after the screw and the hopper have been dismantled. Where the ingredients are frequently changed, an "easy in - easy out" variant is available where the flexible hopper, the screw and the screw tube can simply be lifted out as a unit together with the residual ingredient and be replaced by another pre-assembled unit. The unit conforms to CE directives.



## Technical Data\*

### Available Screw Sizes and Feed Rates

Screw Type	Ø mm x p mm	Tube Designation	Tube Dia. mm	Speed r.p.m.	Max. dm³/hr*
Spiral Screw (S)	S 40/27	443	48.3 x 2.0	168/100 Hz	300
	S 40/42	443	48.3 x 2.0	168/100 Hz	490
	S 52/39	563	60.3 x 2.0	168/100 Hz	740
	S 52/62	563	60.3 x 2.0	168/100 Hz	1230
	S 79/45	843	88.9 x 2.3	168/100 Hz	2000
	S 79/82	843	88.9 x 2.3	168/100 Hz	3800
Blade Screw (B)	B 40/32	443	48.3 x 2.0	168/100 Hz	250
	B 40/46	443	48.3 x 2.0	168/100 Hz	370
	B 50/45	563	60.3 x 2.0	168/100 Hz	665
	B 50/70	563	60.3 x 2.0	168/100 Hz	1080
	B 79/50	843	88.9 x 2.3	168/100 Hz	1925
	B 79/88	843	88.9 x 2.3	168/100 Hz	3550
Granule Screw (S)	S 40/27	563	60.3 x 2.0	168 (335)**/100 Hz	420 ( 820)
	S 40/42	563	60.3 x 2.0	168 (335)**/100 Hz	690 (1360)
	S 52/39	843	88.9 x 2.3	168 (335)**/100 Hz	1310 (2600)
	S 52/62	843	88.9 x 2.3	168 (335)**/100 Hz	2150 (4280)
	S 67/71	843	88.9 x 2.3	168 (335)**/100 Hz	3060 (6120)
Glass Fibre Screw (F)	F 5230/45-K20	563	60.3 x 2.0	168/100 Hz	on request
	F 5245/60-K20	563	60.3 x 2.0	168/100 Hz	on request
	F 7945/60-K39	843	88.9 x 2.3	168/100 Hz	on request
	F 7945/60-K20	843	88.9 x 2.3	168/100 Hz	on request

\*The max. feed rates mentioned above are theoretical values based on a screw filling level and a motor speed of 100 % each. Depending on the flow characteristics of the ingredient the screw filling level may decrease down to 50 %. The feed rates of glass fibre screws are actual rates referring to glass fibres commonly used, well-flowing, bulk density 0.5 kg/dm³, length 3-6 mm.

\*\*Granule screws: with the increased motor output speed the paddles cannot be driven.

### Component Groups

- SS housing (back plate removable)
- Screw and screw tube
- Flexible PU hopper, vol. approx. 43 dm³
- Integrated mounting chassis for all internal component groups
- Frequency controlled 3-phase motor
- Massage paddles to promote ingredient flow without deterioration
- Chainless drive mechanism

### Screw Drive

#### Three-Phase Motor (Direct Drive)

Wattage: 0.37 kW

Protection: IP 55, insulation class F

**Frequency converter FC-B1** in an IP55 housing (setpoint potentiometer or external control by 0-5(10) V, 0(4)-20 mA), or **Frequency Converter FC-V1.1** for control cabinet installation

(external control by 0-5(10) V, 0(4)-20 mA or by setpoint potentiometer).  
Details: see separate Works Standards

### Materials

- Stainless steel exterior housing
- Hopper: PU (white), abrasion-resistant, wear-free, food-proof in compliance with the German Foodstuff and Consumer Goods Act (LMBG)
- Steel parts in contact with ingredient at least SS 1.4301 ≈ AISI 304 (blade screws PU, except for B40/32 and B40/46 = SS 1.4305 ≈ AISI 303)

### Accessories / Options

- Stainless steel ext. hopper, SS 1.4301 (≈ AISI 304), 150 dm³ (approx. 30 kg) or 250 dm³ (approx. 35 kg)
- Cover: inlet/vent pipe (automatic re-

fill) / laid on with handle (manual refill)

- Downspout at screw tube outlet
- Flexible inlet, vent and outlet sleeves
- Screw speed monitoring system
- Separate variable speed paddle motor for infinitely variable setting of the paddle movement frequency
- "Easy in - easy out" variant (hopper, screw and screw tube designed as exchangeable feed unit)
- Quick-closing valve on outlet tube
- Screw extension 300 mm (not for blade screws)
- Exchange screws and screw tubes
- Hopper made of anti-static material

### Fields of Application

Volumetric or - with Brabender scale - gravimetric feeding (see Works Standard "Brabender Loss-in-Weight Feeder Type DDW-H32-FW79-150[250]").



An ISO 9001/EN 29001 Certified Company

\*Modifications reserved. All data describe our products in a general manner. They are no agreement on or warranty of characteristics in the sense of § 434 or guarantee in the sense of § 443 of the German Civil Code or similar regulations and effect no liability.

Issue 2.0 (February 08)  
Supersedes 7.0 (July 03)