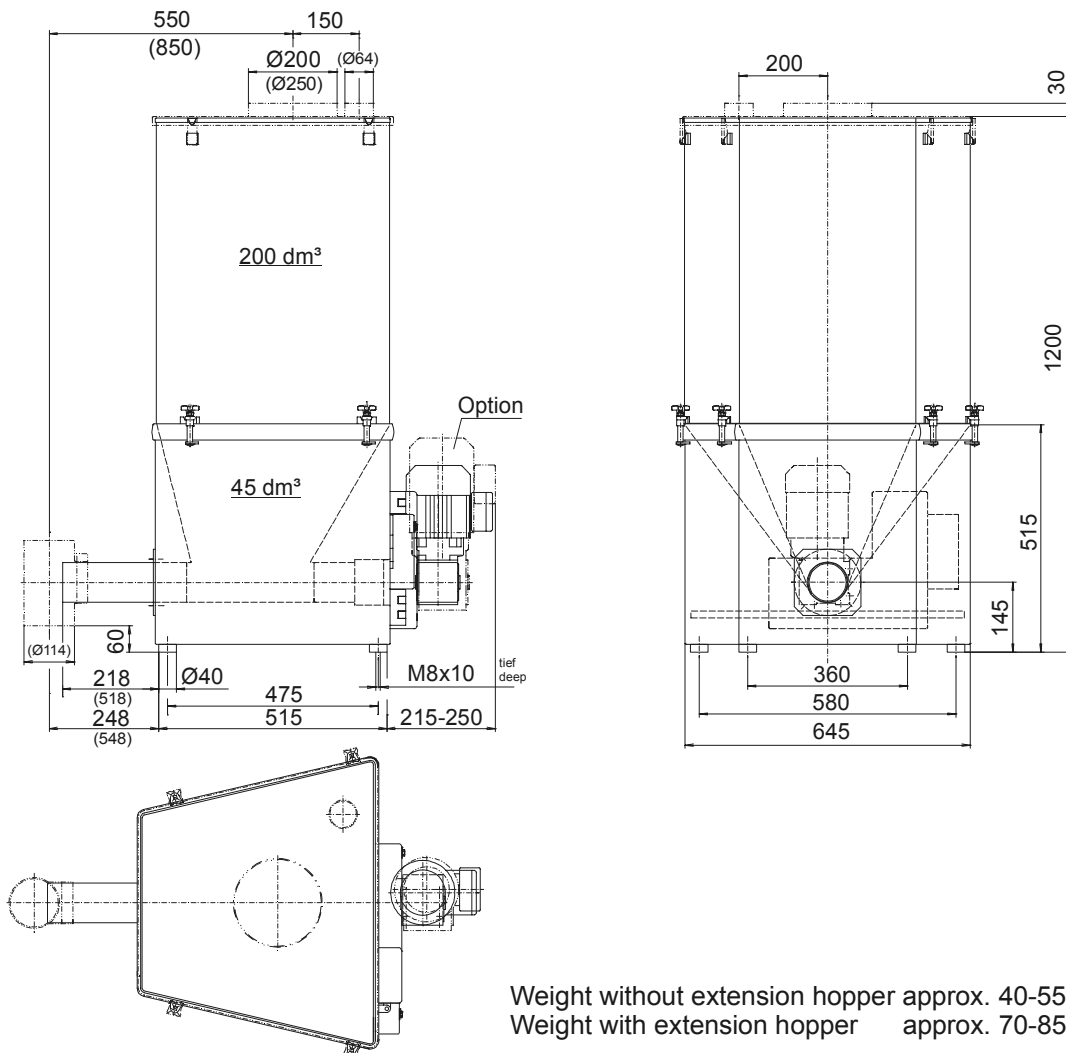


Brabender FlexWall® Plus Feeder Type FW80 Plus

The Brabender FlexWall® Plus Feeder Type FW80 Plus is a compact universal metering feeder for virtually all bulk ingredients and fibres. It is available as a volumetric unit or with a built-in Brabender weighing module as a loss-in-weight feeder for gravimetric feeding. The unit consists of a trapeziform stainless steel exterior housing, a flexible polyurethane hopper with external massage paddles, a single or twin screw with screw tube and a frequency-controlled three-phase current motor driving the screw and the paddles. The trapezoid design and the paddle principle ensuring full agitation of the entire ingredient compartment induce free mass flow and an optimum screw filling level without ingredient deterioration. To suit a variety of ingredients, the paddle agitation amplitudes can

be varied. Single and twin screws are interchangeable. The unique design of the Brabender FlexWall® Plus Feeder permits easy disassembly and cleaning. The polyurethane hopper features a lip, which seals to the upper edge of the stainless steel housing, and can easily be removed for wet cleaning. The super compact trapeziform design allows to configure up to 6 feeders or more around a central point of discharge in an extraordinarily space-saving manner. Suitable support structures can be supplied. Operation, service and maintenance do not require lateral feeder access. For backward screw exchange from the rear feeder end a version can be supplied featuring a slewable motor. A further variant without paddles is also available. The unit conforms to CE directives.



Technical Data*

Available Screw Sizes and Feed Rates					
Screw Type	Ø mm x p mm	Tube Designation	Tube Dia. mm	Speed r.p.m.	Max. Feed Rate dm³/hr*
Spiral Screw (S) (TA = with trough activation)	S 43/27 (TA)	443	48.3 x 2.0	335 (192) / 100 Hz	642 (368)
	S 43/42 (TA)	443	48.3 x 2.0	335 (192) / 100 Hz	1075 (616)
	S 52/39 (TA)	563	60.3 x 2.0	335 (192) / 100 Hz	1388 (796)
	S 52/62 (TA)	563	60.3 x 2.0	335 (192) / 100 Hz	2354 (1349)
	S 67/45	715	76.1 x 2.3	335 (192) / 100 Hz	2944 (1687)
	S 67/71	715	76.1 x 2.3z	335 (192) / 100 Hz	4776 (2737)
	S 79/45	843	88.9 x 2.3	335 (192) / 100 Hz	3989 (2286)
	S 79/82	843	88.9 x 2.3	335 (192) / 100 Hz	7613 (4363)
Blade Screw (B)	B 40/32	443	48.3 x 2.0	335 (192) / 100 Hz	526 (302)
	B 40/46	443	48.3 x 2.0	335 (192) / 100 Hz	787 (451)
	B 50/45	563	60.3 x 2.0	335 (192) / 100 Hz	1349 (773)
	B 50/70	563	60.3 x 2.0	335 (192) / 100 Hz	2163 (1240)
	B 79/50	843	88.9 x 2.3	335 (192) / 100 Hz	3858 (2211)
	B 79/88	843	88.9 x 2.3	335 (192) / 100 Hz	7095 (4066)
Granule Screw (S)	S 43/27	563	60.3 x 2.0	335 (192) / 100 Hz	905 (519)
	S 43/42	563	60.3 x 2.0	335 (192) / 100 Hz	1483 (850)
	S 52/39	715	76.1 x 2.3	335 (192) / 100 Hz	2071 (1187)
	S 52/62	715	76.1 x 2.3	335 (192) / 100 Hz	3439 (1971)
	S 67/45	843	88.9 x 2.3	335 (192) / 100 Hz	3820 (2189)
	S 67/71	843	88.9 x 2.3	335 (192) / 100 Hz	6159 (3530)
Fibre Screw (F)	F 5230/45-K20	563	60.3 x 2.0	335 (192) / 100 Hz	978 (561)
	F 5245/60-K20	563	60.3 x 2.0	335 (192) / 100 Hz	1519 (871)
	F 7945/60-K39	843	88.9 x 2.3	335 (192) / 100 Hz	3123 (1790)
	F 7945/60-K20	843	88.9 x 2.3	335 (192) / 100 Hz	3861 (2213)
Twin Concave Screw (TC)**	TC 40/23	419 T	48.3 x 3.2	335 (192) / 100 Hz	297 (170)
	TC 40/27	470 T	53.0 x 3.0	335 (192) / 100 Hz	708 (406)
	TC 40/50	470 T	53.0 x 3.0	335 (192) / 100 Hz	1656 (949)

* Theor. values at 100 % screw filling level and motor speed. Depending on the flow characteristics the screw filling level may decrease down to 50 %.
** Twin screws only available for model FW80/0 with slewable motor

Models

Typ	Motor	kW	min ⁻¹	Paddles
FW80/0	slewable	0.37	192	yes
FW80/0	slewable	0.75	335	yes
FW80/1	slewable	0.37	335*	no
FW80/5	firm	0.37	192	yes
FW80/6	firm	0.37	335*	no

* optionally 192 min⁻¹

Drive: Standard [Option]

Three-Phase Motor (Direct Drive)

Wattage 0.37 [0.75] kW, enclosure min.
IP 55, insulation class F

Frequency Converter - 0.37 kW: FC-B1/V1.1 [0.75 kW: FC-B2/V2.1], 180-264 V, 48-62 Hz (rated voltage 230 V, 50 Hz),

setpoint potentiometer or control by
0-5 V, 0-10 V, 0(4)-20 mA

Materials

- Stainless steel exterior housing, hopper PU (white), food-proof in compliance with the German Foodstuff and Consumer Goods Act (LMBG)
- Steel parts in touch with ingredient at least SS 1.4301 ≈ AISI 304 (blade screws PU, except for B40/32 and B40/46 = SS 1.4305 ≈ AISI 303)

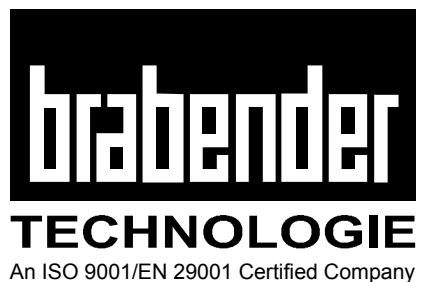
Accessories

- 200 dm³ extension hopper, SS 1.4301

- Cover with inlet pipe and vent pipe
- Laid-on cover with handle
- Downspout at screw tube outlet
- Flexible connection sleeves
- Screw speed monitoring system
- Screw extension 300 mm (not for blade and twin screws)
- Exchange screws and screw tubes
- Hopper made of anti-static material

Fields of Application

Volumetric feeding or with built-in digital load cell DigiMass-2 gravimetric feeding (see Brabender Works Standard "Brabender Loss-in-Weight Feeder Type DDW-MD6-FW80 Plus-200")



*Modifications reserved. All data describe our products in a general manner. They are no agreement on or warranty of characteristics in the sense of § 434 or guarantee in the sense of § 443 of the German Civil Code or similar regulations and effect no liability.

Issue 2.0 (February 08)
Supersedes 8.0 (August 07)