

Brabender Loss-in-Weight Feeder Type DDW-H32-FW79-150[250]

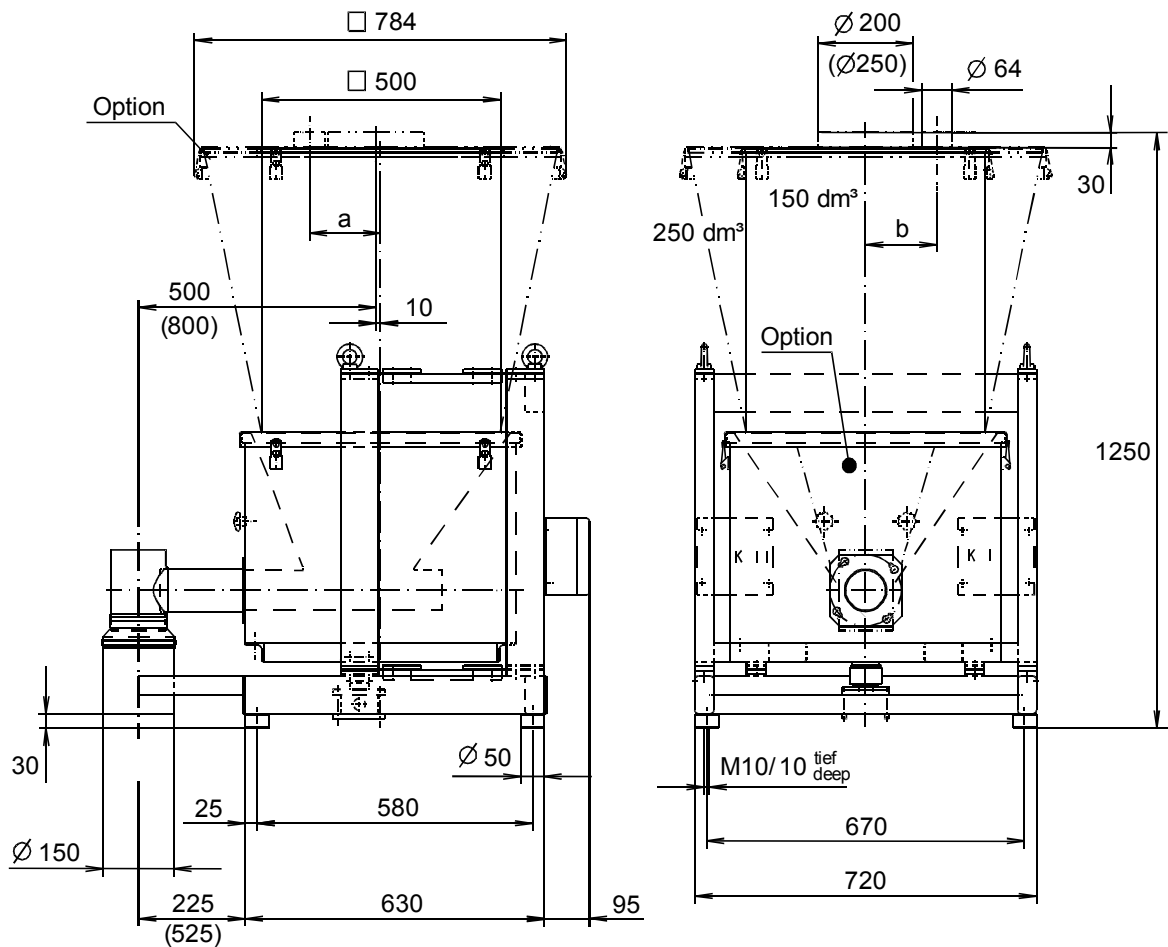
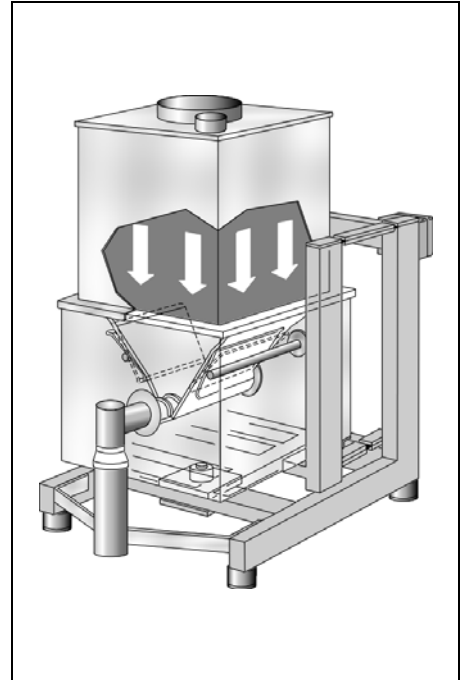
The Brabender loss-in-weight feeder DDW-H32-FW79-150[250] is the gravimetric version of the Brabender FlexWall® Feeder FW79 and feeds powder, granules, pellets, chips, etc. even with poor flowability. It consists of a free-standing mounting base, an integrated scale with a weighing module (Intelligent Digital Load Cell IDL), the Brabender FlexWall® Feeder as feed module and an extension hopper. All modules are fully mounted and wired to junction boxes. Combined with a Congrav® controller or the Brabender SCC Field Bus System they form a high-tech feed system for highest feeding accuracy. The feed module, the Brabender FlexWall® Feeder with flexible polyurethane hopper and external paddle massage, ensures utmost feeding reliability without the disadvantages

of stirring agitators. The inducement of natural material flow and the full agitation of the entire ingredient compartment prevent bridging and particle deterioration and ensure an optimum screw filling level.

To suit a variety of ingredients, three paddle agitation amplitudes and - by an optional separate variable speed motor - also the frequencies of the paddle movement can infinitely be adjusted.

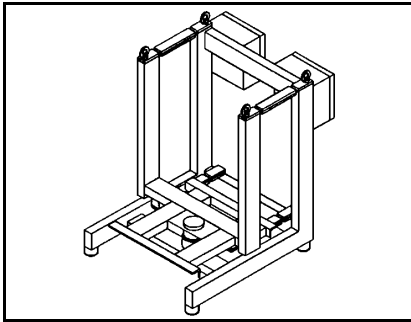
The unique design of the Brabender FlexWall® Feeder permits easy disassembly and cleaning.

All steel parts in contact with the ingredient are made of stainless steel. Mild steel parts are painted light grey as per RAL 7035 (textured coating). The loss-in-weight feeder conforms to CE directives.



Position of vent pipe: 150 dm³ hopper: a = 210 mm, b = 150 mm
 250 dm³ hopper: a = 200 mm, b = 200 mm
 Weight with 150 dm³ hopper approx. 170 kg, with 250 dm³ hopper approx. 175 kg

Technical Data*



Scale / Mounting Base

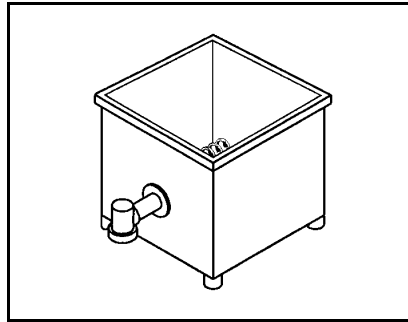
DDW-H32:

- Free-standing mounting base with vibration isolation pads
- Discharge connection pipe for downstream equipment
- Integrated scale with weighing module (Intelligent Digital Load Cell IDL)
- Junction boxes

Weighing ranges:

- 150 kg net with rectangular hopper
- 145 kg net with conical hopper

Further information: Product Info "Intelligent Digital Load Cell IDL"



Feed Module

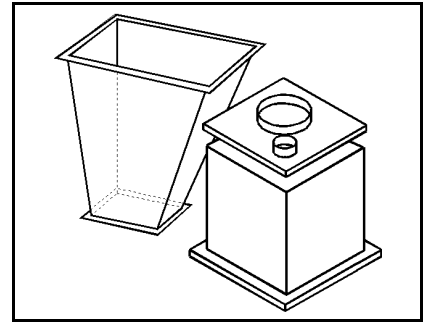
Brabender FlexWall® Feeder FW79:

- Stainless steel exterior housing
- Exchangeable screw
- Flexible polyurethane hopper
- External massage paddles
- Integrated mounting chassis
- Three-phase current motor with overcurrent protection
- Steel parts in contact with ingredient at least SS 1.4301 ≈ AISI 304 (blade screws SS 1.4305 ≈ AISI 303 or PU)

Max. theor. feed rate (assuming 100% screw filling; depending on ingredient flowability the actual rate may decrease down to 50%):

Powder: 3800 dm³/hr
Granules: 6120 dm³/hr

Further information: Works Standard "Brabender FlexWall® Feeder FW79"



Extension Hoppers

- Rectangular hopper module
- Conical hopper module
- Cover module with inlet pipe and vent pipe for automatic refilling
- Laid-on cover module with handle for manual refilling
- All modules made of stainless steel SS 1.4301 (≈ AISI 304)

Hopper volumes:

- Rectangular hopper 150 dm³
- Conical hopper 250 dm³ (suited to the feed rate range)

Further information: Works Standard "Brabender FlexWall® Feeder FW79"

Accessories / Options

- Flexible connection sleeves
- Exchange screws and screw tubes
- Separate paddle drive
- Screw extension 300 mm (not for blade screws)
- Hopper, screw and screw tube designed as exchangeable feed unit

Special Designs

- Pressure-tight design
- Pressure-compensated inlet
- Pressure-compensated outlet
- Explosion-proof design
- "Intelligent" version with built-in control and regulation modules "ISC" (= Intelligent Signal Conditioner) for SCC Field Bus System

Control Modules

Congrav® controller and frequency converter FC-V1.1 for control cabinet mounting or Congrav® operating unit and feeder-mounted control and regulation modules "ISC" for Brabender SCC (= Single Cable Connection) Field Bus System (see the according Works Standards)



TECHNOLOGIE
An ISO 9001/EN 29001 Certified Company

*Modifications reserved. All data describe our products in a general manner. They are no agreement on or warranty of characteristics in the sense of § 434 or guarantee in the sense of § 443 of the German Civil Code or similar regulations and effect no liability.

Issue 2.0 (February 08)
Supersedes 7.0 (July 03)