

Brabender Loss-in-Weight Feeder Type DDW-H33-DDSR60-200[300]

The Brabender Loss-in-Weight Feeder Type DDW-H33-DDSR60-200 [300], the gravimetric version of the Brabender Twin-Screw Feeder Type DDSR 60, feeds bulk ingredients with problematic flow characteristics.

It consists of a free-standing mounting base with integrated scale and weighing module (Intelligent Digital Load Cell IDL), the Brabender Twin-Screw Feeder Type DDSR 60 as feed module and an extension hopper.

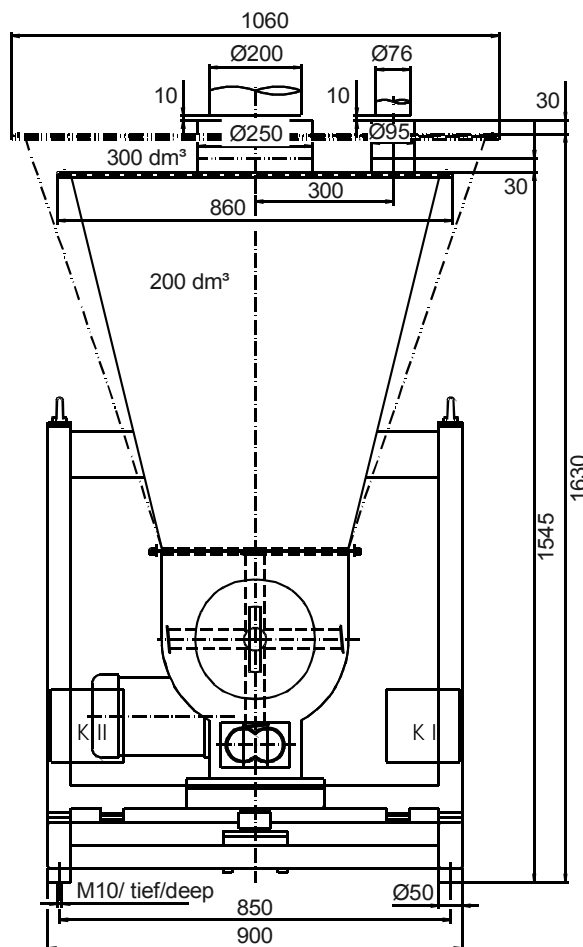
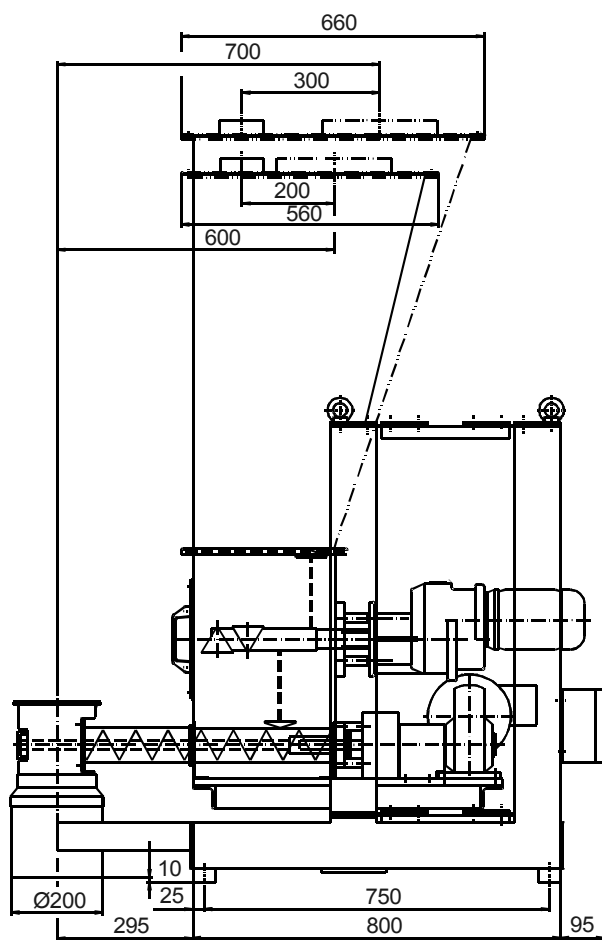
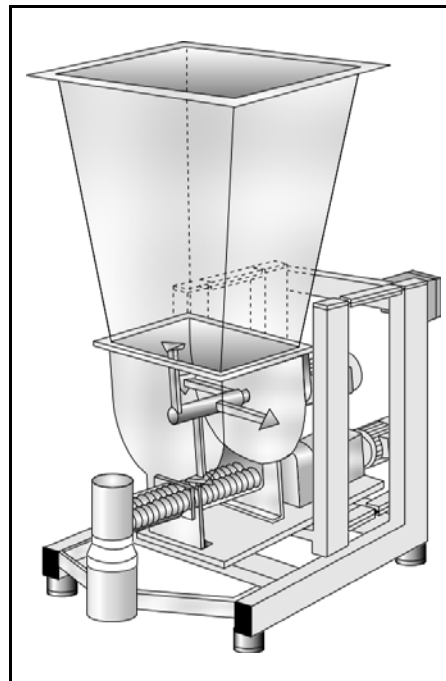
All modules are fully mounted and wired to junction boxes. Combined with a controller from the Congrav® line or the Brabender SCC Field Bus System they form a high-tech feed system for highest feeding accuracy. The feed module, the Brabender Twin-Screw Feeder Type DDSR 60, has been specially designed for poor-

ly flowing or floodable ingredients. The screw profiles are of a universal design and fully interchangeable. Particularly the self-cleaning twin concave screws ensure most reliable feeding even of most difficult ingredients.

The hopper agitator homogenizes the ingredient and ensures reliable ingredient supply to the twin screw and a constant screw filling level. All parts in touch with the ingredient are made of stainless steel.

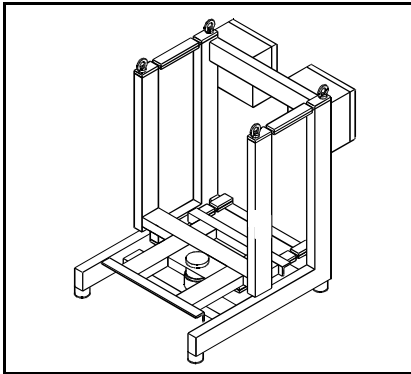
Mild steel parts are painted light grey as per RAL 7035 (textured coating). The unit conforms to CE directives.

Mild steel parts are painted light grey as per RAL 7035 (textured coating). The unit conforms to CE directives.



Weight with 200 dm³ extension hopper approx. 250 kg, with 300 dm³ extension hopper approx. 260 kg

Technical Data*



Scale / Mounting Base

DDW-H33:

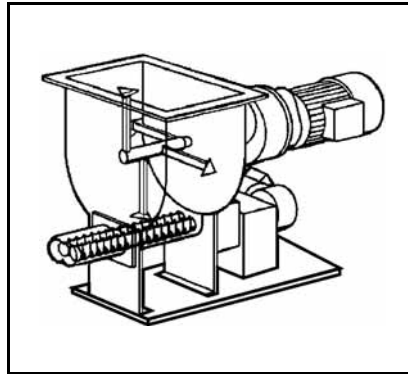
- Free-standing mounting base with vibration isolation pads
- Discharge connection pipe for downstream equipment
- Integrated scale with weighing module (Intelligent Digital Load Cell IDL)
- Junction boxes

Weighing ranges:

- 400 kg net with 200 dm³ extension hopper
- 390 kg net with 300 dm³ extension hopper

Further information:

Brabender Product Information "Intelligent Digital Load Cell IDL-F"



Feed Module

Brabender Twin-Screw Feeder DDSR 60:

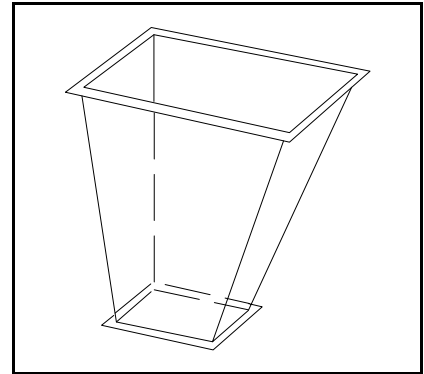
- Screw hopper
- Hopper agitator with 3-phase motor
- Exchangeable twin screw
- Three-phase current screw drive motor
- Parts in contact with ingredient SS 1.4301 ≈ AISI 304 (twin concave screws SS 1.4305 ≈ AISI 303)

Max. theor. feed rate (assuming 100% screw filling; depending on ingredient flowability the actual rate may decrease down to 50%):

Twin concave screw 3700 dm³/h
 Twin spiral screw 7500 dm³/h
 Twin blade screw 6800 dm³/h

Further information:

Works Standard "Brabender Twin-Screw Feeder Type DDSR 60"



Extension Hoppers

- Conical hopper modules
- Cover modules with inlet pipe and vent pipe for automatic refilling
- All modules made of stainless steel SS 1.4301 (≈ AISI 304)

Hopper volumes:

- 200 dm³
- 300 dm³ (suited to the feed rate range)

Further information:

Works Standard "Brabender Twin-Screw Feeder Type DDSR 60"

Accessories / Options

- Flexible connection sleeves
- Exchange screws
- Exchange screw tubes
- Laid-on cover with handle for manual refilling
- Safety grid, SS 1.4301 (≈ AISI 304)

Special Designs

- Pressure-tight design
- Pressure-compensated designs
- Explosion-proof designs
- Special extension hopper, round with discharge agitator, 180 dm³, SS 1.4301 (≈ AISI 304)
- Design for SCC Field Bus System

Control Modules

Congrav[®] controller and frequency converter FC-V2.1 for control cabinet mounting or Congrav[®] operating unit and feeder-mounted control and regulation modules "ISC" for Brabender SCC (= Single Cable Connection) Field Bus System (see the according Works Standards)



An ISO 9001/EN 29001 Certified Company

*Modifications reserved. All data describe our products in a general manner. They are no agreement on or warranty of characteristics in the sense of § 434 or guarantee in the sense of § 443 of the German Civil Code or similar regulations and effect no liability.

Issue 2.0 (February 08)
 Supersedes 3.0 (March 03)