

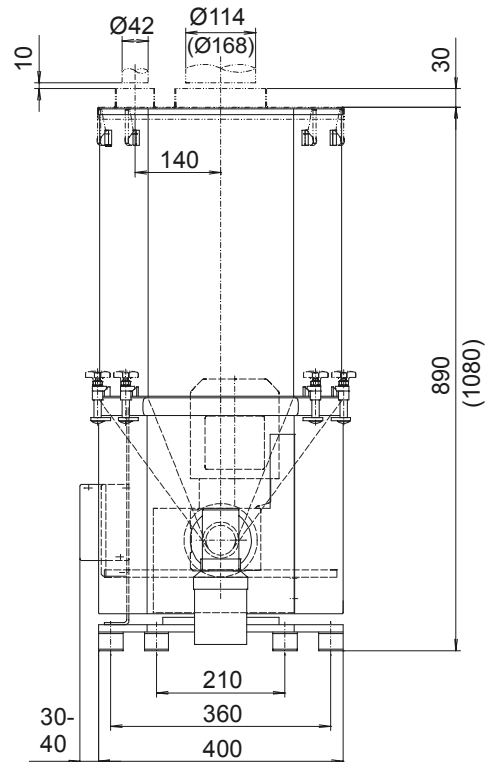
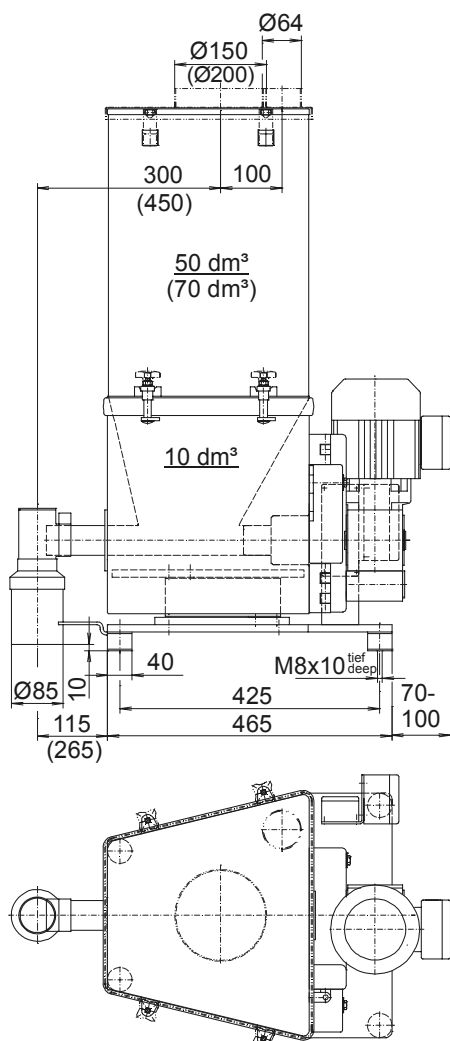
Brabender Loss-in-Weight Feeder Type DDW-MD5-FW40 Plus-50[70]

The Brabender Loss-in-Weight Feeder Type DDW-MD5-FW40 Plus-50[70] is the gravimetric version of the Brabender FlexWall®Plus Feeder FW40 Plus and feeds virtually all bulk ingredients and fibres. It consists of a free-standing mounting base/weighing module combination with digital load cell DigiMASS-2, the Brabender FlexWall®Plus Feeder as feed module and an extension hopper module. All modules are fully mounted and internally wired to junction boxes. The feed module, the Brabender FlexWall®Plus Feeder with its flexible polyurethane hopper agitated by external massage paddles, ensures utmost feeding reliability without the disadvantages of stirring agitators. The trapezoid design and the paddle principle ensuring full agitation of the entire ingredient compartment induce free mass flow

and an optimum screw filling level without ingredient deterioration. To suit a variety of ingredients, the paddle agitation amplitudes can be varied. The super compact trapeziform design allows to configure up to six feeders or more around a central point of discharge in an extraordinarily space-saving manner. Suitable support structures can be supplied. Operation, service and maintenance do not require lateral feeder access. For backward screw exchange from the rear feeder end a version can be supplied featuring a slewable motor. A further variant without paddles is also available.

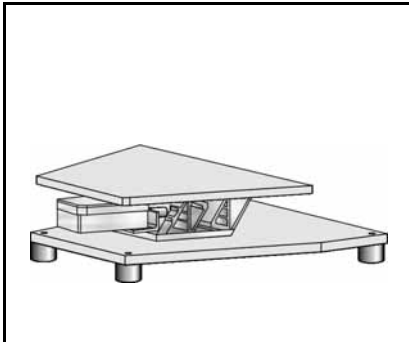
All steel parts in touch with the ingredient are made of stainless steel. Mild steel parts are painted light grey as per RAL 7035.

The unit conforms to CE directives.



Weight approx. 65-75 kg

Technical Data*



Base / Weighing Module

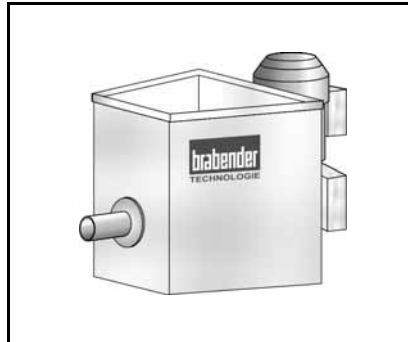
Mounting base/weighing module combination MD5:

- Free-standing mounting base with vibration isolation pads
- Digital load cell DigiMASS-2 with two vibrating wires according to the principle of weight detection by comparison of masses
- Junction boxes

Weighing range:

- approx. 50 kg net with 50 dm³ extension hopper
- approx. 47 kg net with 70 dm³ extension hopper

Further information: Brochure "Digital Load Cell DigiMASS-2"



Feed Module

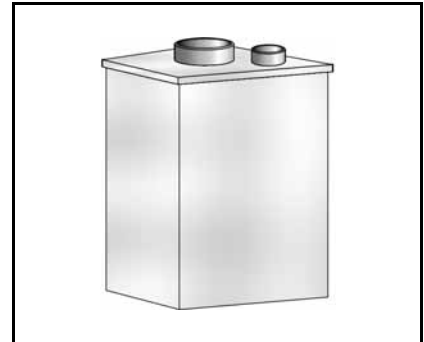
FlexWall® Plus Feeder Type FW40 Plus:

- Stainless steel trapeziform housing
- Exchangeable screw profile
- Flexible polyurethane hopper
- External massage paddles
- Three-phase current motor with overcurrent protection
- Steel parts in touch with ingredient at least SS 1.4301 ≈ AISI 304 (blade screws 1.4305 ≈ AISI 303)

Max. theor. feed rate (assuming 100% screw filling; depending on ingredient flowability the actual rate may decrease down to 50%):

- Powder: 1075 dm³/hr
- Granules: 798 dm³/hr

Further information: Works Standard "FlexWall® Plus Feeder FW40 Plus"



Extension Hopper Modules

- Trapeziform hopper module
- Cover module with inlet pipe and vent pipe for automatic refilling
- Laid-on cover module with handle for manual refilling
- All modules made of stainless steel SS 1.4301 (≈ AISI 304)

Extension hopper volume:

- 50 dm³
- 70 dm³

Further information: Works Standard "FlexWall® Plus Feeder FW40 Plus"

Accessories / Options

- Flexible connection sleeves
- Exchange screws and screw tubes
- Screw extension 150 mm (not for blade screws)
- Support structures
- Slewable motor for backward screw exchange from the rear feeder end
- Version without massage paddles

Special Designs

- Pressure-tight design
- Pressure-compensated design
- Explosion-proof design
- Hygienic design
- "Intelligent" version with built-in control and regulation modules "ISC" (Intelligent Signal Conditioner) for SCC Field Bus System

Control Modules

Congrav® controller and frequency converter FC-V1.1 for control cabinet mounting or Congrav® operating unit and feeder-mounted control and regulation modules "ISC" for Brabender SCC (Single Cable Connection) Field Bus System (see the according Works Standards)



TECHNOLOGIE
An ISO 9001/EN 29001 Certified Company

*Modifications reserved. All data describe our products in a general manner. They are no agreement on or warranty of characteristics in the sense of § 434 or guarantee in the sense of § 443 of the German Civil Code or similar regulations and effect no liability.

Issue 2.0 (February 08)
Supersedes 8.0 (August 07)