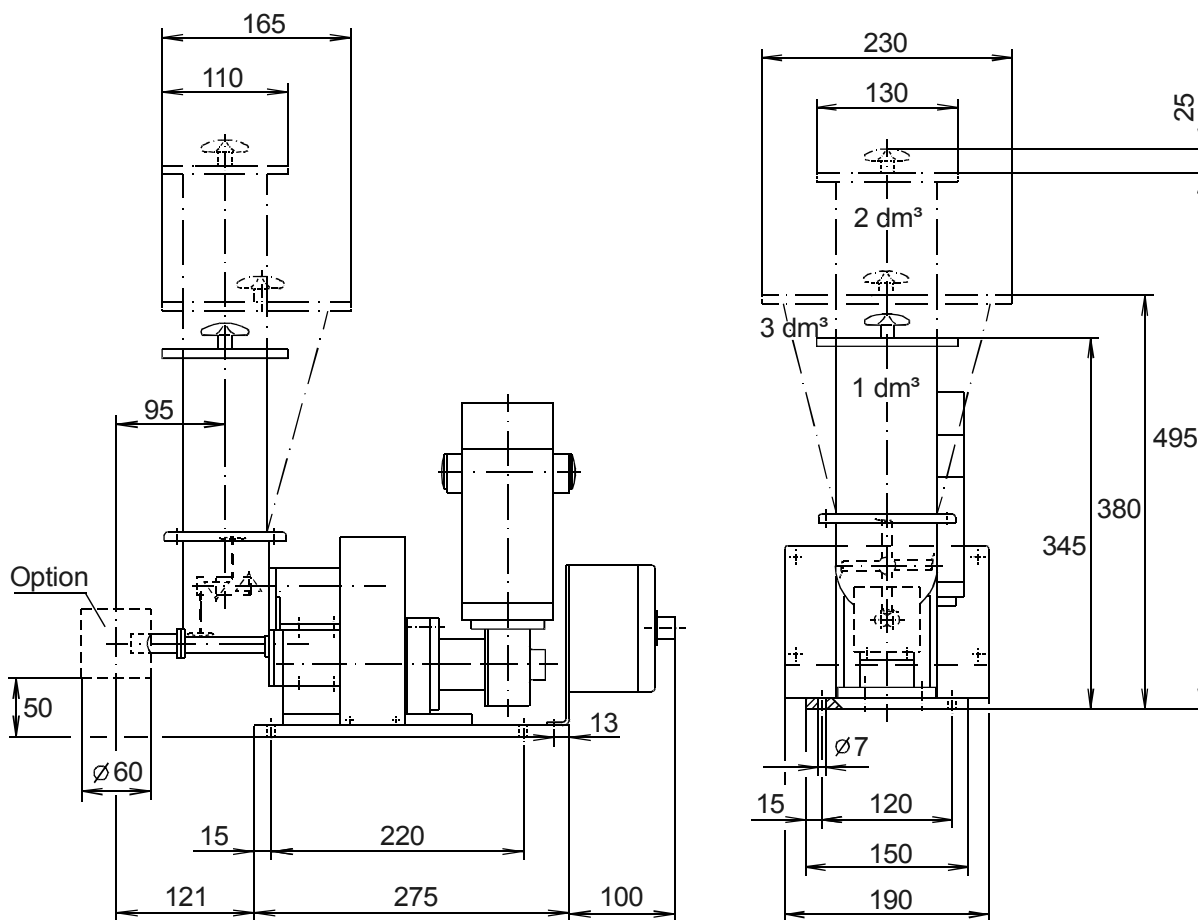
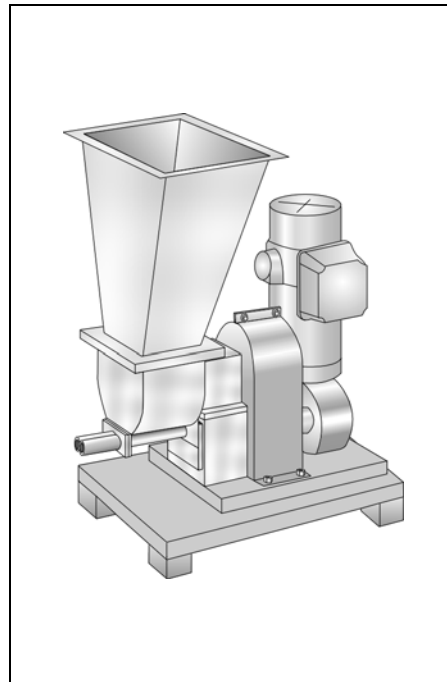


Brabender MiniTwin Feeder Type MT

The Brabender MiniTwin Feeder from the Brabender Lab Line is one of the smallest twin-screw feeders in the world and feeds powders at minimum feed rates down to 50 g/hr. This is made possible by its screw profiles of no more than 12 mm in diameter. Especially when fine powders are fed at ultra-low rates, the self-cleaning twin concave screws offer particularly brilliant dispense without pulsations. Depending on refill method, feed rate and storage requirements, the Brabender MiniTwin Feeder can be combined with an extension hopper of 1 dm³, 2 dm³ or 3 dm³ volume. Each hopper is equipped with a safety grid. The Brabender MiniTwin Feeder is available both as a stand-alone volumetric unit or, combined with a Brabender scale and a microcomputer

controller from the Congrav[®] line, as a high-tech loss-in-weight feeder for gravimetric feeding (see Brabender Works Standard "Brabender Loss-in-Weight Scale Type DDW-P2-MT with Brabender MiniTwin Feeder"). The volumetric version is supplied with a speed controller mounted on the unit, fully wired and featuring a setpoint potentiometer and a built-in line filter. All parts in touch with the ingredient are made of stainless steel. Mild steel parts are painted light grey as per RAL 7035 (textured coating). The unit conforms to CE standard.



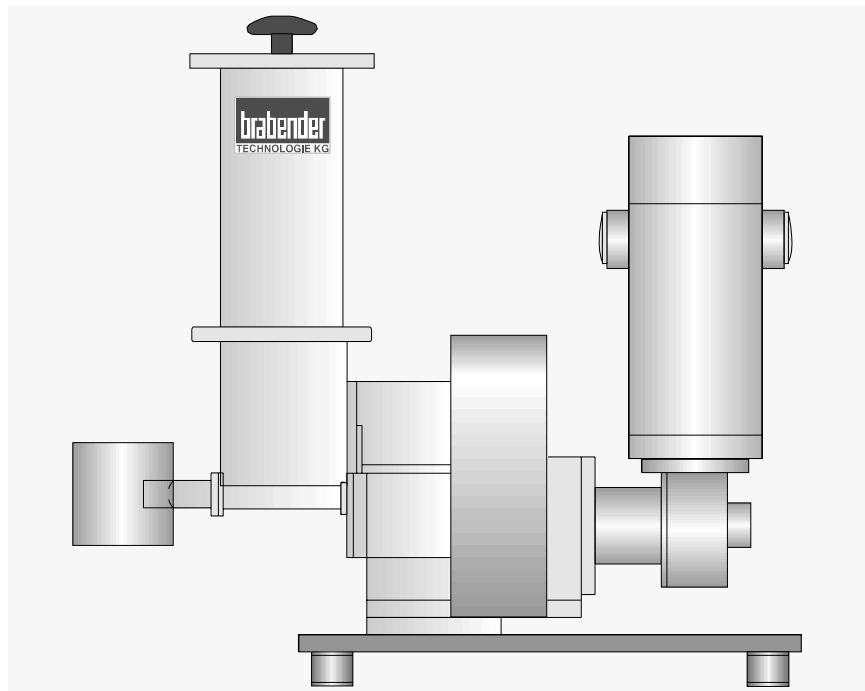
Weight with 1 dm³ extension hopper approx. 10 kg, 2 dm³ hopper approx. 10.5 kg, 3 dm³ hopper approx. 11 kg

Technical Data*

Available Screw Sizes and Feed Rates

Screw Type Ø mm x p mm	Tube Designation	Tube Dia. mm	Speed r.p.m.	Max. feed Rate dm ³ /hr*
Twin-Concave Screw TC 12/04	130 T	16 x 1.5	195 (100)	1.8 (0.9)
TC 12/12	130 T	16 x 1.5	195 (100)	7.0 (3.5)

* The max. feed rates mentioned above are theoretical values based on a screw filling level and a motor speed of 100 % each. Depending on the ingredient flow characteristics the screw filling level may decrease down to 50 %.



Materials / Finish

- Parts in touch with the ingredient
SS 1.4301 ≈ AISI 304 (screws SS 1.4305 ≈ AISI 303), mild steel parts painted light grey as per RAL 7035 (textured coating)

Accessories / Options

- Exchange screw
- 2 optional motor speeds
- Downspout at screw tube end
- Hopper cover with handle
- Gravimetric version as loss-in-weight feeder with Brabender scale and Congrav[®] feed controller (see Works Standards "Brabender Loss-in-Weight Scale Type DDW-MD1-MT with Brabender MiniTwin Feeder" and "Congrav[®]")

Component Groups

- Twin-screw feed module with trough agitator
- DC gear motor
- Extension hopper, 1, 2 or 3 dm³, incl. safety grid
- Base plate
- Brabender Speed Controller, mounted on the feeder (applicable to volumetric version only)

DC Speed Controller

- Closed housing IP 55
- Input voltage: 230 VAC ± 10 %, 50/60 Hz
- Built-in setpoint potentiometer
- Built-in line filter
- The device conforms to EC regulations 89/336/EEC (electromagnetic compatibility); 73/23/EEC and 93/68/EEC (low voltage)

Drive

- DC gear motor (screw and agitator drive):
- Wattage: 0.09 kW
 - Voltage: 160 V
 - Speed: 79 r.p.m.
(Option: 40 r.p.m.)
 - Enclosure protection: IP 55
 - Insulation class F

brabender
TECHNOLOGIE

An ISO 9001/ EN 29001 Certified Company

*Modifications reserved. All data describe our products in a general manner. They are no agreement on or warranty of characteristics in the sense of § 434 or guarantee in the sense of § 443 of the German Civil Code or similar regulations and effect no liability.

Issue 5.0 (May 09)
Supersedes 2.0 (February 08)