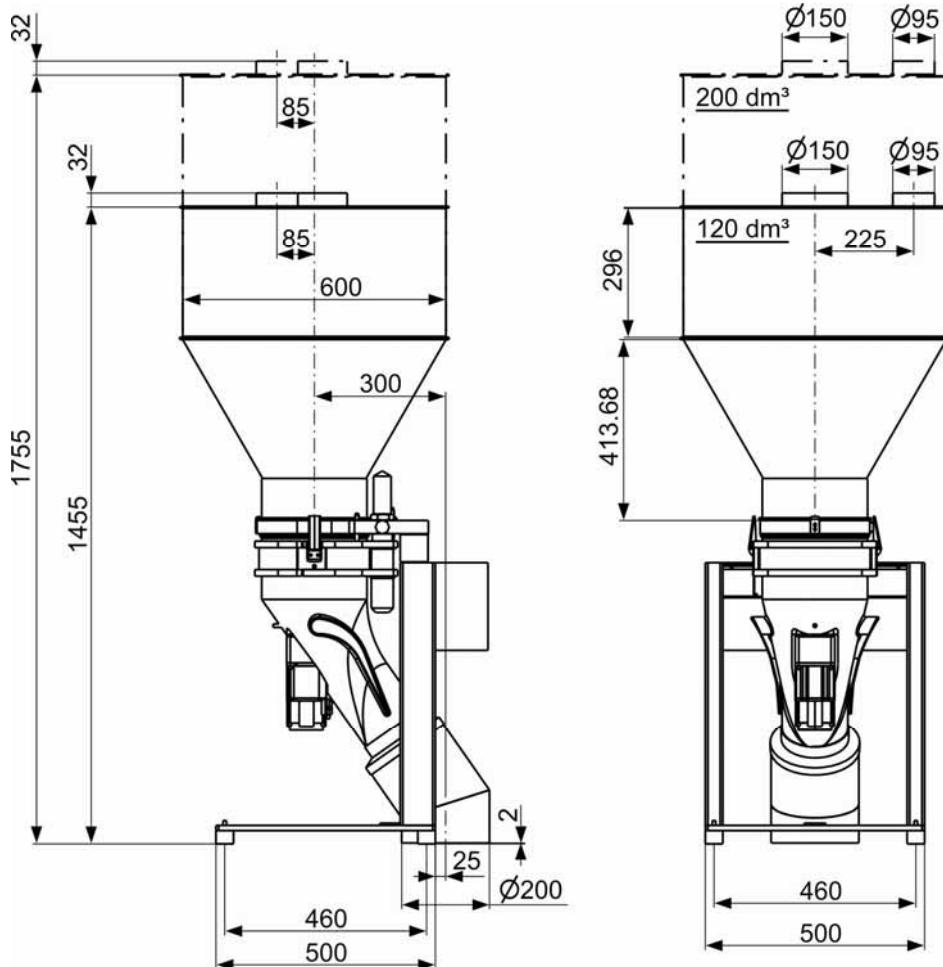
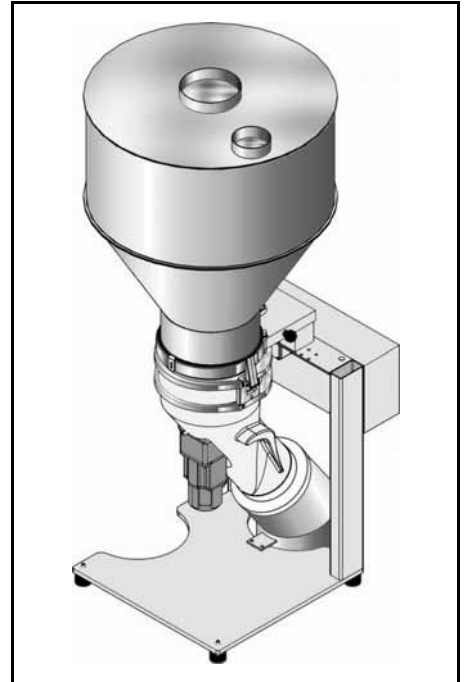


Brabender Loss-in-Weight ScrewDisc® Feeder Type DDW-MS6-SD100-120[200]

The Loss-in-Weight ScrewDisc® Feeder DDW-MS6-SD100-120[200] for pellets and free flowing bulk ingredients consists of the Brabender ScrewDisc® Feeder SD100, a hopper with cover, a free-standing mounting base and a feeder-to-scale connection with lowering mechanism and built-in weighing module. All component groups are fully mounted and internally wired to junction boxes. The ScrewDisc® Feeder features a novel feeding principle with a vertical feed screw on a horizontal rotating disc, both mounted in a transparent outlet made of conductive PUR. A vertical tubular PUR insert slipped over the feed screw replaces the conventional screw tube. Beside most compact dimensions with a short inlet-outlet distance the vertical design offers reliable solid flow and a constant screw filling level of virtually 100%.

Convenient handling is ensured by the ThreeFlex system allowing quick recipe changeover without tools in three steps (1 - lowering, 2 - cleaning, 3 - feed element exchange). For discharge the feed unit including the PUR outlet is lowered by means of the lowering mechanism and turned into any desired discharge position (pivoting range 360°). The PUR outlet itself including disc and screw and the PUR insert can then also be lowered and swung out to the side for access to the feeder interior for cleaning. PUR insert, screw and disc can be removed for feeder adaptation to other feed rates and/or ingredients. Ingredient-touched steel parts are made of stainless steel 1.4301 ≈ AISI 304. Mild steel parts are painted light grey (RAL 7035). The unit conforms to CE directives.



Weight with 120 dm³ hopper approx. 90 kg, with 200 dm³ hopper approx. 100 kg

Technical Data*

Available Screw Sizes and Feed Rates

Screw Type	Ø mm x p mm	PUR Insert	Max. Feed Rate
Vertikal Screw (VS)	VS 40/20	PUI 42	300 dm³/hr*
	VS 60/30	PUI 62	1100 dm³/hr*
	VS 80/40	PUI 82	2800 dm³/hr*
	VS 100/50	PUI 102	5600 dm³/hr*

* Theoretical values at 100 % screw filling level and 100 % motor speed. Turndown ratio 100:1.

ScrewDisc® Feeder SD100

- Vertical feed screw, mounted on a horizontal rotating disc
- PUR insert serving as screw tube
- Pivoted transparent PUR outlet with integrated handles, also serving as the feeder housing
- Servo motor 230 VAC with built-in speed controller and serial control signal interface RS 485

Mounting Base / Scale

- Free-standing mounting base with vibration isolation pads
- Base-mounted discharge connection
- Junction boxes
- Feeder-to-scale connection with

lowering mechanism for feeder discharging and slewing (pivoting range 360°), built-in weighing module MS6 with high accuracy weighing signal evaluation for digital further processing

- Gross weighing range 200 or 300 kg, depending on the respective application. Net weighing range in case of 200 kg approx. 155 kg (120 dm³ hopper) or 145 kg (200 dm³ hopper), in case of 300 kg approx. 255 kg (120 dm³ hopper) or 245 kg (200 dm³ hopper)

Hopper Modules

- Conical hopper with cylindrical extension, volume 120 or 200 dm³, safety grid, fixed by spring clamps

- Cover with inlet pipe and vent pipe or laid-on cover with handle

Accessories / Options

- Flexible connection sleeves
- Exchange screws and exchange PUR inserts

Control

- Single feeder control: single feeder controller Congrav® CB with operating unit Congrav® OP 1 for control cabinet installation (see respective Brabender Works Standards)
- Multiple feeder control: one scale-mounted control module "ISC" (Intelligent Signal Conditioner) or one control cabinet mounted single feeder controller Congrav® CB per feeder in combination with a common multiple feeder operating unit Congrav® RC 4 or Congrav® OP 5 Touch in the Brabender SCC (Single Cable Connection) Field Bus System (see respective Brabender Works Standards)

Handling without tools: Brabender ThreeFlex Handling System



1 Lowering



2 Cleaning



3 Feed element exchange

brabender

TECHNOLOGIE

An ISO 9001/EN 29001 Certified Company

*Modifications reserved. All data describe our products in a general manner. They are no agreement on or warranty of characteristics in the sense of § 434 or guarantee in the sense of § 443 of the German Civil Code or similar regulations and effect no liability.

Issue 4.0 (April 08)
Supersedes none