



FlexWall® Plus

FW80/1

Volumetric and Gravimetric



General Information

The FlexWall® Plus [FW80/1](#) feeder is ideal for free flowing bulk ingredients. The feeder has the following main components: a stainless steel trapezoidal housing, flexible polyurethane trough with a large trough cross-section, a feed screw, a screw tube, 3 phase motor and a trapezoidal extension hopper with volumes of 100 dm³(3.53 cuft) or 200 dm³ (7.06 cuft).

The shape of the trough provides consistent screw filling and mass flow without ingredient deterioration.

The [FW80/1](#) features a hinged motor for screw change from the rear.

The FlexWall® Plus is easily disassembled for wet or dry cleaning as the polyurethane hopper that is attached to the housing is easily removed. Moreover, the [compact trapezoidal shape](#) allows up to 6 feeders to be arranged around a central feed point. Service can be from the front or back.

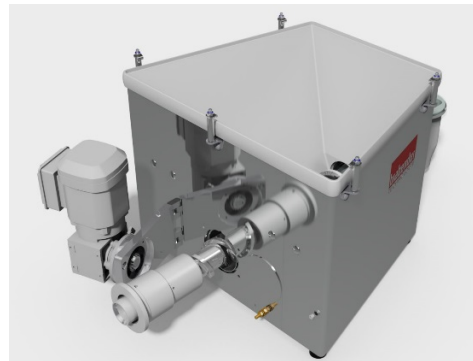
The gravimetric version includes the analog weighing system [MS6](#), or the digital weighing systems [DLS6](#) (Digital Load System) or [MD6](#) (for highest measurement accuracy), both featuring a high resolution robust digital load cell with serial data transmission and advanced filtering technology.

The unit conforms to CE directives.



Model Specification

Screw drive	hinged
Drive power	0.37 kW (0.5 HP)
Screw speed	192 min ⁻¹
Screw speed optional	335 min ⁻¹
Massage paddles	no
Separate paddle drive	no



Control modules

Control and speed modules are offered either mounted onto the feeder ([Congrav® CM-E](#)) or are available for mounting in a separate control panel ([Congrav® CB-E](#) or [Congrav® CB-S](#)).

Controls can communicate directly to most host/ PLC systems or to Brabender Technologie Congrav® Operator Interfaces.

Technical Drawings and Dimensions

	volumetric feeders	gravimetric feeder	
		Control module CB	Control module CM
100 dm ³ (3.53 cuft) hopper	FW80/1-100	DDW-DLS(MD)(S)6-FW80/1-100	DDW-DLS(MD)(S)6-FW80/1-100 CM
200 dm ³ (7.06 cuft) hopper	FW80/1-200	DDW-DLS(MD)(S)6-FW80/1-200	DDW-DLS(MD)(S)6-FW80/1-200 CM



FlexWall® Plus

FW80/1

Volumetric and Gravimetric



Available Screw Sizes and Feed Rates

Screw type	Designation Ø / p [mm]	Tube designation	Tube dia. [mm]	Max. speed [min ⁻¹]	Max. feed rate * [dm ³ /h]	Max. feed rate* [cuft/hr]
Spiral screw (S)	S 43/27	443	48.3x2.0	192 (335) / 100Hz	368 (642)	13 (22.7)
	S 43/42	443	48.3x2.0	192 (335) / 100Hz	616 (1075)	21.8 (38)
	S 52/39	563	60.3x2.0	192 (335) / 100Hz	796 (1388)	28.1 (49)
	S 52/62	563	60.3x2.0	192 (335) / 100Hz	1349 (2354)	47.6 (83.1)
	S 67/45	715	76.1x2.3	192 (335) / 100Hz	1615 (2818)	57 (99.5)
	S 67/71	715	76.1x2.3	192 (335) / 100Hz	2662 (4644)	94 (164)
	S 79/45	843	88.9x2.3	192 (335) / 100Hz	2286 (3989)	80.7 (140.9)
	S 79/82	843	88.9x2.3	192 (335) / 100Hz	4363 (7613)	154.1 (268.9)
Spiral screw (S) for granules	S 43/27	563	60.3x2.0	192 (335) / 100Hz	505 (881)	17.8 (31.1)
	S 43/42	563	60.3x2.0	192 (335) / 100Hz	837 (1461)	29.6 (51.6)
	S 52/39	715	76.1x2.3	192 (335) / 100Hz	1155 (2015)	40.8 (71.2)
	S 52/62	715	76.1x2.3	192 (335) / 100Hz	1942 (3388)	68.6 (119.6)
	S 67/45	843	88.9x2.3	192 (335) / 100Hz	2090 (3646)	73.8 (128.8)
	S 67/71	843	88.9x2.3	192 (335) / 100Hz	3430 (5984)	121.1 (211.3)
Blade screw (B)	B 40/32	443	48.3x2.0	192 (335) / 100Hz	302 (526)	10.7 (18.6)
	B 40/46	443	48.3x2.0	192 (335) / 100Hz	451 (787)	15.9 (27.8)
	B 50/45	563	60.3x2.0	192 (335) / 100Hz	773 (1349)	27.3 (47.6)
	B 50/70	563	60.3x2.0	192 (335) / 100Hz	1240 (2163)	43.8 (76.4)
	B 79/50	843	88.9x2.3	192 (335) / 100Hz	2211 (3858)	78.1 (136.2)
	B 79/88	843	88.9x2.3	192 (335) / 100Hz	4066 (7095)	143.6 (250.6)

* Theoretical values at 100% screw filling level and motor speed. Depending on the flow characteristics the screw filling level may decrease to 50%. Further limitations have to be considered for gravimetric feeding, as max. speed should be reduced to allow for bulk density variations.

Technical Specification

Ambient temperature:	0°C to +45°C (32°F to 113°F)	* Available options: Conductive or chemically resistant FDA approval polyurethane
Humidity of the air:	up to 85% without condensation	
max. vacuum/pressure:	3 hPa (3 mbar) (1.2 inches of water)	** 3 phase motors are designed for a power supply of: 230/400 V, 50 (60) Hz, and for the operation in TT networks, TN networks or networks with earthed neutral conductor. For different networks adaptation measures are necessary.
Product temperature:	0°C to +50°C (32°F to 122°F)	
max. bulk density (volumetric):	1.5 kg/dm ³ *(94 lb/cuft)	
Max. bulk density (gravimetric):	1.5 kg/dm ³ (94 lb/cuft) with hopper 100dm ³ (3.53 cuft) 1.1 kg/dm ³ (69 lb/cuft) with hopper 200 dm ³ (7.06 cuft)	
Flexible screw trough:	polyurethane, food-proof acc. to LMBG*	
Housing, extension hopper, hopper lid:	1.4301 (304 SS)	
Screws, screw tubes, outlets:	1.4571 (316 SS), 1.4301 (304 SS) or polyurethane, food-proof acc. to LMBG*	
Non-contact components:	Aluminium, plated or painted steel (RAL 7035)	
100 or 200 dm ³ extension hopper	Hopper lid for automatic refilling with vent pipe or manual refilling	
Screw drive:	0.37 kW (1/2 HP), IP65; ISO class F; TEFC; frequency-controlled	
Power supply:	AC 230/400 V (110VAC/460VAC)- 50Hz** or 266/460 V (230/460VAC) - 60Hz	
Net weighing range DLS6/MD6:	243 kg (535.7 lb) with hopper 100 dm ³ (1.75 cuft) 231 kg (509.2 lb) with hopper 200 dm ³ (7.06 cuft)	
Net weighing range MS6:	213 kg (469.5 lb) with hopper 100 dm ³ (1.75 cuft) 201 kg (443.1 lb) with hopper 200 dm ³ (7.06 cuft)	

Options and Accessories

- Flexible [inlet and vent connections](#)
- Flexible [outlet connections](#)
- Interchangeable screws and screw tubes
- [BagDumper](#) (for manual refilling)
- [DESTACO clamp fasteners](#) with and without safety switch
- Versions for higher and lower temperatures
- [Explosion-proof versions](#) as per directive 2014/34/EU (ATEX) or NFPA
- FlexWall®Plus with [Hygienic Design \(HD\)](#) as per directive 1935/2004 or FDA
- Screw extension 300 mm (11.8 inches) (not for blade and fiber screws)
- Vertical outlet with [quick release](#)
- [Maintenance disconnect box](#)
- [Filter bag](#) or [JetFilter](#) for vent stub
- [Turntable](#) or [cart mounting](#)
- Pressure [compensation for the outlet](#) and/or [feeder hopper](#)
- Cleaning and refill systems upon request