



# FlexWall® Plus

## FW80/6

Volumetric and gravimetric



### General Information

The FlexWall® Plus [FW80/6](#) feeder is ideal for free flowing bulk ingredients. The feeder has the following main components: a stainless steel trapezoidal housing, flexible polyurethane trough with a large cross-section, a screw, a screw tube, 3 phase motor and a trapezoidal extension hopper with volumes of 100 dm<sup>3</sup> (3.53 cuft) or 200 dm<sup>3</sup> (7.06 cuft).

The shape of the trough provides a consistent screw filling and mass flow without ingredient deterioration.

Screw removal of the FW80/6 is from the front only.

The FlexWall® Plus is easily disassembled for wet or dry cleaning as the polyurethane hopper that is attached to the housing is easily removed. Moreover, the [compact trapezoidal shape](#) allows up to 6 feeders to be arranged around a central feed point. Service can be from the front or back.

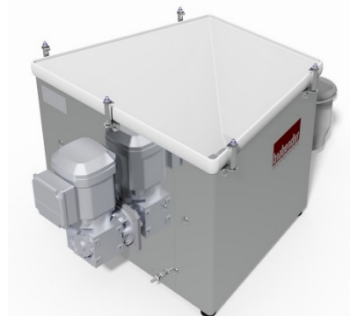
The gravimetric version includes the analog weighing system [MS6](#), or the digital weighing systems [DLS6](#) (Digital Load System) or [MD6](#) (for highest measurement accuracy), both featuring a high resolution robust digital load cell with serial data transmission and advanced filtering technology.

The unit conforms to CE directives.



### Model Specification

Screw drive	fixed
Drive power	0.37 kW (0.5 HP)
Screw speed	192 min <sup>-1</sup>
Screw speed optional	335 min <sup>-1</sup>
Massage paddles	no



### Control modules

Control and speed modules are offered either mounted onto the feeder ([Congrav® CM-E](#)) or are available for mounting in a separate control panel ([Congrav® CB-E](#) or [Congrav® CB-S](#)).

Controls can communicate directly to most host/ PLC systems or to Brabender Technologie Congrav® Operator Interfaces.

### Technical Drawings and Dimensions

	volumetric feeders	gravimetric feeder	
		Control module CB	Control module CM
100 dm <sup>3</sup> (3.5 cuft) hopper	<a href="#">FW80/6-100</a>	<a href="#">DDW-DLS(MD)(S)6-FW80/6-100</a>	<a href="#">DDW-DLS(MD)(S)6-FW80/6-100 CM</a>
200 dm <sup>3</sup> (7 cuft) hopper	<a href="#">FW80/6-200</a>	<a href="#">DDW-DLS(MD)(S)6-FW80/6-200</a>	<a href="#">DDW-DLS(MD)(S)6-FW80/6-200 CM</a>



# FlexWall® Plus

## FW80/6

Volumetric and gravimetric



### Available Screw Sizes and Feed Rates

Screw type	Designation Ø / p [mm]	Tube designation	Tube dia. [mm]	Max. speed [min <sup>-1</sup> ]	Max. feed rate * [dm <sup>3</sup> /h]	Max. feed rate* [cuft/hr]
<a href="#">Spiral screw (S)</a>	S 43/27	443	48.3x2.0	192 (335) / 100Hz	368 (642)	13 (22.7)
	S 43/42	443	48.3x2.0	192 (335) / 100Hz	616 (1075)	21.8 (38)
	S 52/39	563	60.3x2.0	192 (335) / 100Hz	796 (1388)	28.1 (49)
	S 52/62	563	60.3x2.0	192 (335) / 100Hz	1349 (2354)	47.6 (83.1)
	S 67/45	715	76.1x2.3	192 (335) / 100Hz	1615 (2818)	57 (99.5)
	S 67/71	715	76.1x2.3	192 (335) / 100Hz	2662 (4644)	94 (164)
	S 79/45	843	88.9x2.3	192 (335) / 100Hz	2286 (3989)	80.7 (140.9)
	S 79/82	843	88.9x2.3	192 (335) / 100Hz	4363 (7613)	154.1 (268.9)
<a href="#">Spiral screw (S) for granules</a>	S 43/27	563	60.3x2.0	192 (335) / 100Hz	505 (881)	17.8 (31.1)
	S 43/42	563	60.3x2.0	192 (335) / 100Hz	837 (1461)	29.6 (51.6)
	S 52/39	715	76.1x2.3	192 (335) / 100Hz	1155 (2015)	40.8 (71.2)
	S 52/62	715	76.1x2.3	192 (335) / 100Hz	1942 (3388)	68.6 (119.6)
	S 67/45	843	88.9x2.3	192 (335) / 100Hz	2090 (3646)	73.8 (128.8)
	S 67/71	843	88.9x2.3	192 (335) / 100Hz	3430 (5984)	121.1 (211.3)
<a href="#">Blade screw (B)</a>	B 40/32	443	48.3x2.0	192 (335) / 100Hz	302 (526)	10.7 (18.6)
	B 40/46	443	48.3x2.0	192 (335) / 100Hz	451 (787)	15.9 (27.8)
	B 50/45	563	60.3x2.0	192 (335) / 100Hz	773 (1349)	27.3 (47.6)
	B 50/70	563	60.3x2.0	192 (335) / 100Hz	1240 (2163)	43.8 (76.4)
	B 79/50	843	88.9x2.3	192 (335) / 100Hz	2211 (3858)	78.1 (136.2)
	B 79/88	843	88.9x2.3	192 (335) / 100Hz	4066 (7095)	143.6 (250.6)

\* Theoretical values at 100% screw filling level and motor speed. Depending on the flow characteristics the screw filling level may decrease to 50%. Further limitations must be considered for gravimetric feeding, as max. speed should be reduced to allow for bulk density variations.

### Technical specification

Ambient temperature:	0°C to +45°C (32°F to 113°F)	* Available options: Conductive or chemically resistant FDA approval polyurethane
Humidity of the air:	up to 85% without condensation	
max. vacuum/pressure:	3 hPa (3 mbar) (1.2 inches of water)	** 3 phase motors are designed for a power supply of: 230/400 V, 50 (60) Hz, and for the operation in TT networks, TN networks or networks with earthed neutral conductor. For different networks adaptation measures are necessary.
Product temperature:	0°C to +50°C (32°F to 122°F)	
max. bulk density (volumetric):	1.5 kg/dm <sup>3</sup> * (94 lb/cuft)	
Max. bulk density (gravimetric):	1.5 kg/dm <sup>3</sup> (94 lb/cuft) with hopper 100dm <sup>3</sup> (3.53 cuft) 1.0 kg/dm <sup>3</sup> (64 lb/cuft) with hopper 200 dm <sup>3</sup> (7.06 cuft)	
Flexible screw trough:	polyurethane, food-proof acc. to LMBG*	
Housing, extension hopper, hopper lid:	1.4301 (304 SS)	
Screws, screw tubes, outlets:	1.4571 (316 SS), 1.4301 (304 SS) or polyurethane, food-proof acc. to LMBG*	
Non-contact components:	Aluminium, plated or painted steel (RAL 7035)	
100 or 200 dm <sup>3</sup> extension hopper	Hopper lid for <a href="#">automatic refilling</a> with vent pipe or <a href="#">manual refilling</a>	
Screw drive:	0.37 kW (0.5 HP), IP65; ISO class F; TEFC; frequency-controlled	
Power supply:	AC 230/400 V (110VAC/460VAC)- 50Hz** or 266/460 V (230/460VAC) - 60Hz	
Net weighing range DLS6/MD6:	238 kg (524.7 lb) with hopper 100 dm <sup>3</sup> (3.53 cuft) 226 kg (498.2 lb) with hopper 200 dm <sup>3</sup> (7.06 cuft)	
Net weighing range MS6:	208 kg (458.5 lb) with hopper 100 dm <sup>3</sup> (3.53 cuft) 196 kg (432.1 lb) with hopper 200 dm <sup>3</sup> (7.06 cuft)	

### Options and Accessories

- Flexible [inlet and vent connections](#)
- Flexible [outlet connections](#)
- Interchangeable screws and screw tubes
- [BagDumper](#) (for manual refilling)
- [DESTACO clamp fasteners](#) with and without safety switch
- Versions for higher and lower temperatures than standard
- [Explosion-proof versions](#) as per directive 2014/34/EU (ATEX) or NFPA
- FlexWall® Plus with [Hygienic Design \(HD\)](#) as per directive 1935/2004 or FDA
- Screw extension 300 mm (11.81 inches) (not for blade and fiber screws)
- Vertical outlet with [quick release](#)
- [Maintenance disconnect box](#)
- [Filter bag](#) or [JetFilter](#) for vent pipe
- [Turntable](#) or [cart mounting](#)
- Pressure [compensation for the outlet](#), and/or [feeder hopper](#)
- Cleaning and refill systems upon request