

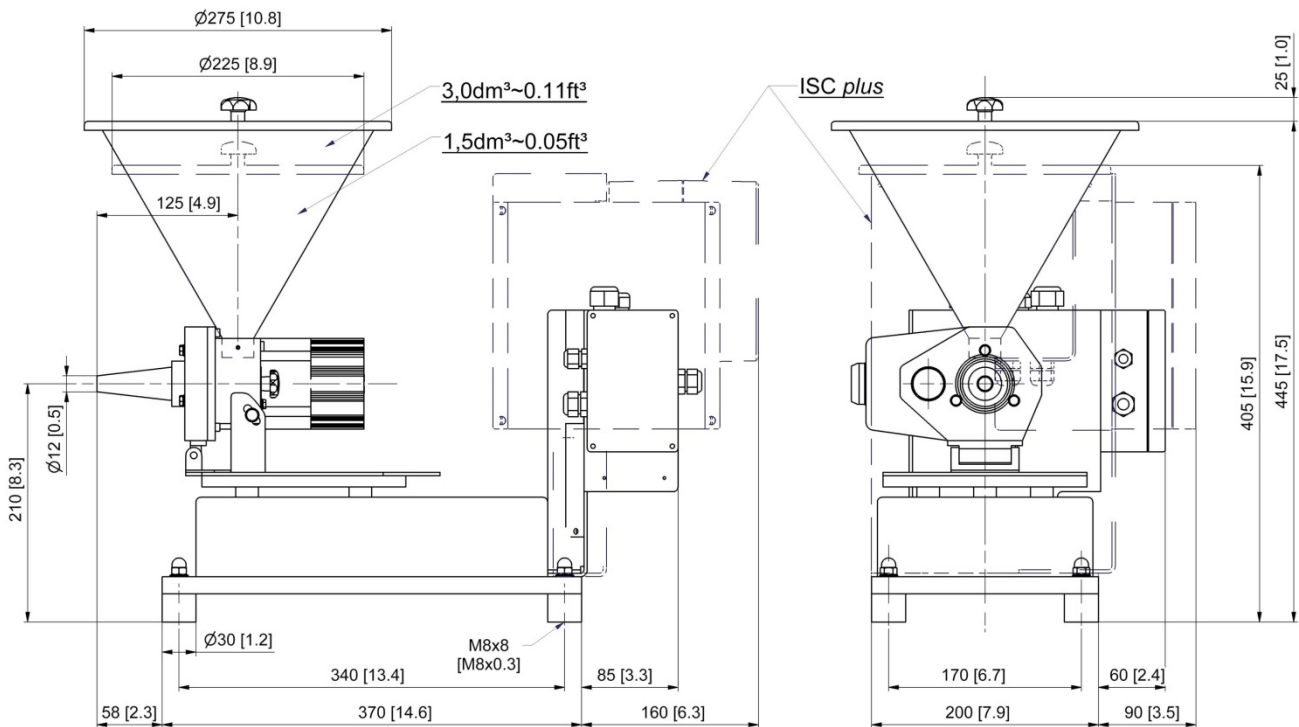
Brabender Loss-in-Weight Feeder DDW-MD0-RT-1.5(3.0) with Brabender RotoTube Micro Feeder

The Brabender DDW-MD0-RT-1.5(3.0) loss-in-weight feeder from the "Brabender Lab Line", the gravimetric version of the Brabender RotoTube Micro Feeder RT, is capable of reliably and accurately metering pellets and granular ingredients with temperatures from 0 to 45°C (32-113°F) at rates of a few grams per hour. The feeder has the following main components: a free-standing mounting base/scale with a digital load cell ("DigiMASS-2"), a Brabender RotoTube Micro Feeder and an extension hopper for ingredient storage. The DigiMASS-2 load cell has the following features: a theoretical resolution of 4,000,000:1, twin vibrating wire technology which compensates for temperature change and external vibration, filtering software, and a serial interface ensuring high-speed data communication. The RotoTube Micro Feeder is a miniature rotary tube feeder with a brushless DC motor with an integrated speed controller. If more coarse-grained ingredients, in particular pellets are fed, individual

pellets can be dispensed one after the other. Hence the feeder is particularly suitable for laboratory operation. To help adjust the feed rate, the feeder is equipped with an infinitely variable tilting system to incline the rotary tube. Extension hoppers are available with 1.5 dm³ (0.05 ft³) or 3.0 dm³ (0.11 ft³) volume.

All components are fully mounted and wired to junction boxes. For proper function the feeder must be protected against vibration and air currents. Optional mass plate mounted versions or designs with air current protection are available. Further options include versions with onboard control electronics ("ISC plus"). Ingredient contact steel parts are made of stainless steel. Mild steel parts are painted light grey (RAL 7035). Environmental conditions: 0-45°C (32-113°F), up to 85% humidity without condensation.

The feeder conforms to CE directives.

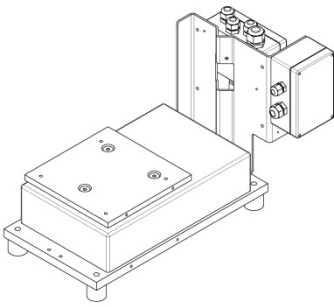


Weight with 1.5 dm³/0.05 ft³ extension hopper approx. 20 kg (44.1 lb)

Weight with 3.0 dm³/0.11 ft³ extension hopper approx. 21 kg (46.3 lb)

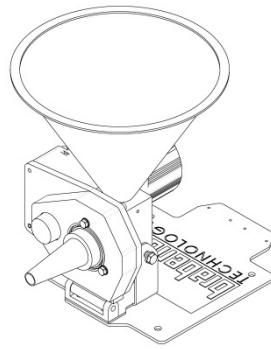
Dimensions in mm (in)

Technical Data



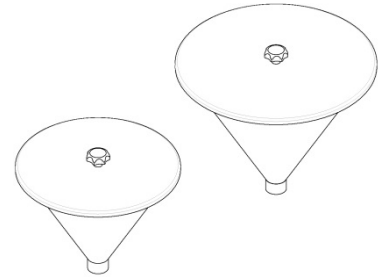
Mounting Base / Scale MDO

- Free-standing mounting base with vibration isolation feet and junction boxes
- Digital load cell DigiMASS-2 (2 vibrating wires)
- Approx. net weighing ranges:
 - 3.5 kg/7.7 lb (1.5 dm³/0.05 ft³ extension hopper)
 - 2.5 kg/5.5 lb (3.0 dm³/0.11 ft³ extension hopper)



RotoTube Micro Feeder RT

- Miniature rotary tube feed module
- Brushless DC motor (0.05 kW, 230 V, IP65, with integrated speed controller, tube speed max. 67 rpm)
- Tube tilting system for manual feed rate adjustment
- Ingredient contact surfaces are stainless steel SS 1.4301 (304)



Extension Hoppers

- Extension hoppers
 - 1.5 dm³ (0.05 ft³), steep sided
 - 3.0 dm³ (0.11 ft³), steep sided
- Lift off cover
- Stainless steel SS 1.4301 (304)

Accessories

- Mass plate with isolators for additional vibration isolation, mild steel painted light grey as per RAL 7035 (for dimensions see separate drawing)
- Air currents protection (transparent polycarbonate) for wind isolation (for dimensions see separate drawing)

Options

- Designs for higher or lower ingredient and/or ambient temperatures (standard = 0-45°C ≈ 32-113°F each)

Controls

Feeder control modules are offered either mounted on the feeder or for mounting in a separate panel. Controls can communicate directly to most host/PLC systems or to Brabender Congrav[®] Operator Interfaces (see Congrav[®] Works Standards)



Modifications reserved. All data describe our products in a general manner. They are no agreement on or warranty of characteristics in the sense of § 434 or guarantee in the sense of § 443 of the German Civil Code or similar regulations and effect no liability.

Issue 4.0 (April 16)
Supersedes 8.0 (August 13)

