

## Brabender Congrav® OP 1T Operator Interface for Single Gravimetric Feeders with Congrav® CB *plus*

The Brabender Congrav® OP 1T is an operator interface used for a single gravimetric feeder or as a maintenance display/interface for multiple feeder systems. The OP 1T has a 5.7" high resolution color touch screen housed in an IP65 (≈ NEMA 4) enclosure.

The Congrav® OP 1T is used in conjunction with the individual feeder control module Congrav® CB *plus* to operate and set up the feeder.

If the Congrav® CB *plus* communicates with a host/PLC system directly, the Congrav® OP 1T can additionally be interfaced with the CB *plus* for diagnostics and maintenance.

The OP 1T is easily connected to the CB *plus* with one cable providing both power and communication.

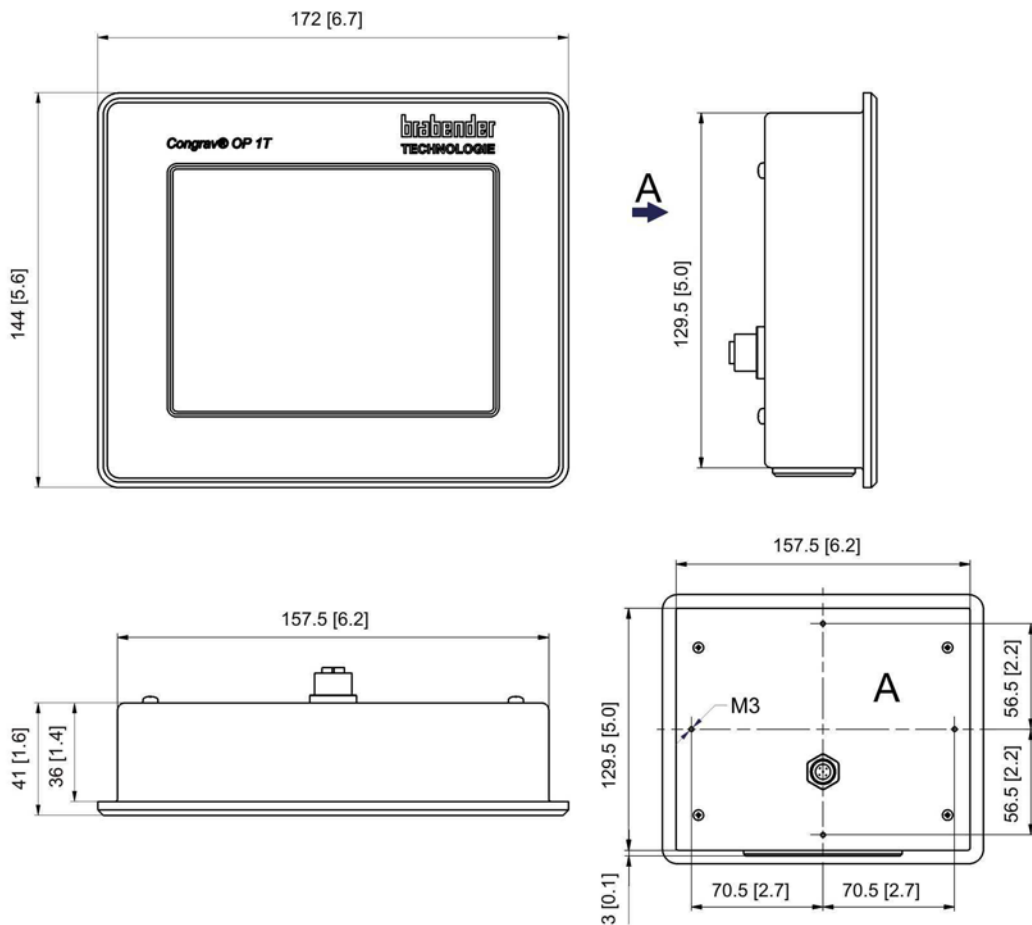
The Congrav® OP 1T uses a simple

symbol based touch screen menu with a virtual keypad to operate the feeder.

The symbols are self-explanatory making it very user friendly.

The Brabender Congrav® OP 1T operator interface conforms to CE directives and features high electromagnetic compatibility.

(Please refer to Brabender Works Standard "Brabender Feeder Control Module Congrav® CB *plus* for Single Gravimetric Feeders" for additional information.)



Dimensions in mm (in)

## Technical Data

### Application

The Brabender Congrav® OP 1T is an operator interface used for a single gravimetric feeder in conjunction with the individual feeder control module Congrav® CB plus to operate and set up the feeder. (Please refer to Brabender Works Standard "Brabender Feeder Control Module Congrav® CB plus for Single Gravimetric Feeders" for additional information.)

### Design

- Housing and screen IP65 (≈ NEMA 4)
- 5.7" color LCD touch screen display  
144 x 105 mm (5.6 x 4.1 in), LED backlit
- Resolution 320 x 240 (QVGA)
- Symbol based interface with virtual keypad
- Front framing: aluminum
- Rear housing: stainless steel
- Weight approx. 0.8 kg (1.7 lb)
- Mounting depth 100 mm (3.9 in)  
with right angle connector
- Panel cutout 160 x 135 mm (6.2 x 5.3 in)
- Power supply 24 VDC (supply by control module Congrav® CB plus, no separate power supply required)
- Operation in environmental conditions of 0-50°C (32-122°F) and up to 85% humidity without condensation

### Interface

- RS 485 to control module Congrav® CB plus, connection cable also provides 24 VDC power supply (max. length 300 m/984 ft, lengths > 20 m/65 ft require a separate 24 VDC, 300 mA power supply)

### Noise Immunity

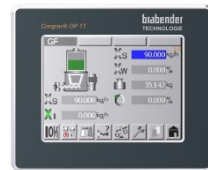
- The unit complies with the following directives and harmonized specifications of the European Union:
  - EN 61000-4-2 (ESD immunity)
  - EN 61000-4-3 (radiated RF immunity)
  - EN 61000-4-4 (burst immunity)
  - EN 61000-4-5 (surge immunity)
  - EN 61000-4-6 (conducted RF immunity)
  - CISPR 16 / EN 55011 class A (interference voltage)

### Feeder Compatibility

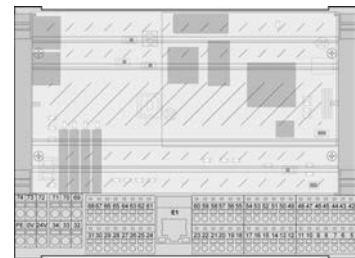
The OP 1T is compatible with all Brabender loss-in-weight feeders, weigh-belt feeders and coriolis mass flow meters using Congrav® CB plus control modules.

### Maintenance

The OP 1T can also be used for maintenance, troubleshooting and set up on an individual Congrav® CB plus module that is connected to a host/PLC system or in multiple feeder systems.



Congrav® OP 1T  
Operator Interface



Congrav® CB plus control module



Modifications reserved. All data describe our products in a general manner. They are no agreement on or warranty of characteristics in the sense of § 434 or guarantee in the sense of § 443 of the German Civil Code or similar regulations and effect no liability.

Issue 4.0 (April 16)  
Supersedes 8.0 (August 12)